



GRIF-1 Polyclonal Antibody

Catalog No	BYab-12732
Isotype	IgG
Reactivity	Human;Rat;Mouse;
Applications	IHC;IF;ELISA
Gene Name	TRAK2
Protein Name	Trafficking kinesin-binding protein 2
Immunogen	The antiserum was produced against synthesized peptide derived from human TRAK2. AA range:430-480
Specificity	GRIF-1 Polyclonal Antibody detects endogenous levels of GRIF-1 protein.
Formulation	Liquid in PBS containing 50% glycerol, 0.5% BSA and 0.02% sodium azide.
Source	Polyclonal, Rabbit,IgG
Purification	The antibody was affinity-purified from rabbit antiserum by affinity-chromatography using epitope-specific immunogen.
Dilution	IHC: 1/100 - 1/300. ELISA: 1/10000.. IF 1:50-200
Concentration	1 mg/ml
Purity	≥90%
Storage Stability	-20°C/1 year
Synonyms	TRAK2; ALS2CR3; KIAA0549; Trafficking kinesin-binding protein 2; Amyotrophic lateral sclerosis 2 chromosomal region candidate gene 3 protein
Observed Band	
Cell Pathway	Cytoplasm . Early endosome . Mitochondrion . Colocalizes with MGARP at the mitochondria. Translocates from the cytoplasm to the mitochondria in a MGARP-dependent manner (By similarity). .
Tissue Specificity	Widely expressed, with highest expression in heart.
Function	PTM:O-glycosylated.,similarity:Contains 1 HAP1 N-terminal domain.,subunit:Interacts with GABA-A receptor and O-GlcNAc transferase (By similarity). Interacts with RHOT1/Miro-1 and RHOT2/Miro-2.,tissue specificity:Widely expressed, with highest expression in heart.,
Background	PTM:O-glycosylated.,similarity:Contains 1 HAP1 N-terminal domain.,subunit:Interacts with GABA-A receptor and O-GlcNAc transferase (By similarity). Interacts with RHOT1/Miro-1 and RHOT2/Miro-2.,tissue specificity:Widely expressed, with highest expression in heart.,

Nanjing BYabscience technology Co.,Ltd



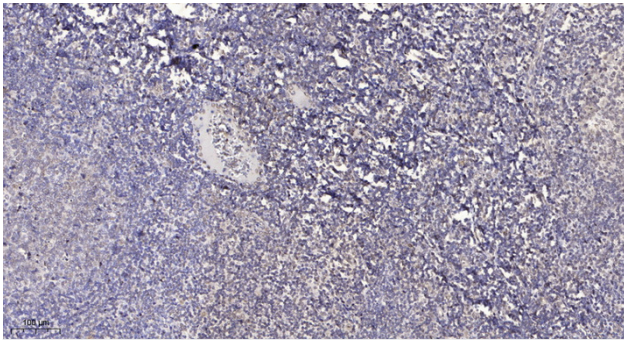
matters needing attention

Avoid repeated freezing and thawing!

Usage suggestions

This product can be used in immunological reaction related experiments. For more information, please consult technical personnel.

Products Images



Immunohistochemical analysis of paraffin-embedded human tonsil. 1, Antibody was diluted at 1:200(4° overnight). 2, Tris-EDTA,pH9.0 was used for antigen retrieval. 3,Secondary antibody was diluted at 1:200(room temperature, 30min).