



GABA T-1 Polyclonal Antibody

Catalog No	BYab-12723
Isotype	IgG
Reactivity	Human;Mouse;Rat
Applications	WB;ELISA
Gene Name	SLC6A1
Protein Name	Sodium- and chloride-dependent GABA transporter 1
Immunogen	The antiserum was produced against synthesized peptide derived from human SLC6A1. AA range:381-430
Specificity	GABA T-1 Polyclonal Antibody detects endogenous levels of GABA T-1 protein.
Formulation	Liquid in PBS containing 50% glycerol, 0.5% BSA and 0.02% sodium azide.
Source	Polyclonal, Rabbit,IgG
Purification	The antibody was affinity-purified from rabbit antiserum by affinity-chromatography using epitope-specific immunogen.
Dilution	Western Blot: 1/500 - 1/2000. ELISA: 1/40000. Not yet tested in other applications.
Concentration	1 mg/ml
Purity	≥90%
Storage Stability	-20°C/1 year
Synonyms	SLC6A1; GABATR; GABT1; GAT1; Sodium- and chloride-dependent GABA transporter 1; GAT-1; Solute carrier family 6 member 1
Observed Band	67kD
Cell Pathway	Cell membrane; Multi-pass membrane protein. Membrane; Multi-pass membrane protein. Cell junction, synapse, presynapse . Localized at the plasma membrane and in a subset of intracellular vesicles. Localized at the presynaptic terminals of interneurons (By similarity). .
Tissue Specificity	Brain,
Function	domain:The PDZ domain-binding motif is involved in the interaction with MPP5.,function:Terminates the action of GABA by its high affinity sodium-dependent reuptake into presynaptic terminals.,miscellaneous:This protein is the target of psychomotor stimulants such as amphetamines or cocaine.,similarity:Belongs to the sodium:neurotransmitter symporter (SNF) family.,subcellular location:Localized at the plasma membrane and in a subset of intracellular vesicles. Localized at the presynaptic terminals of interneurons.,subunit:Interacts with MPP5.,

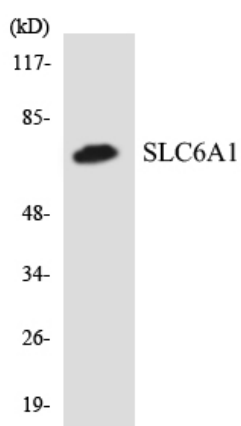
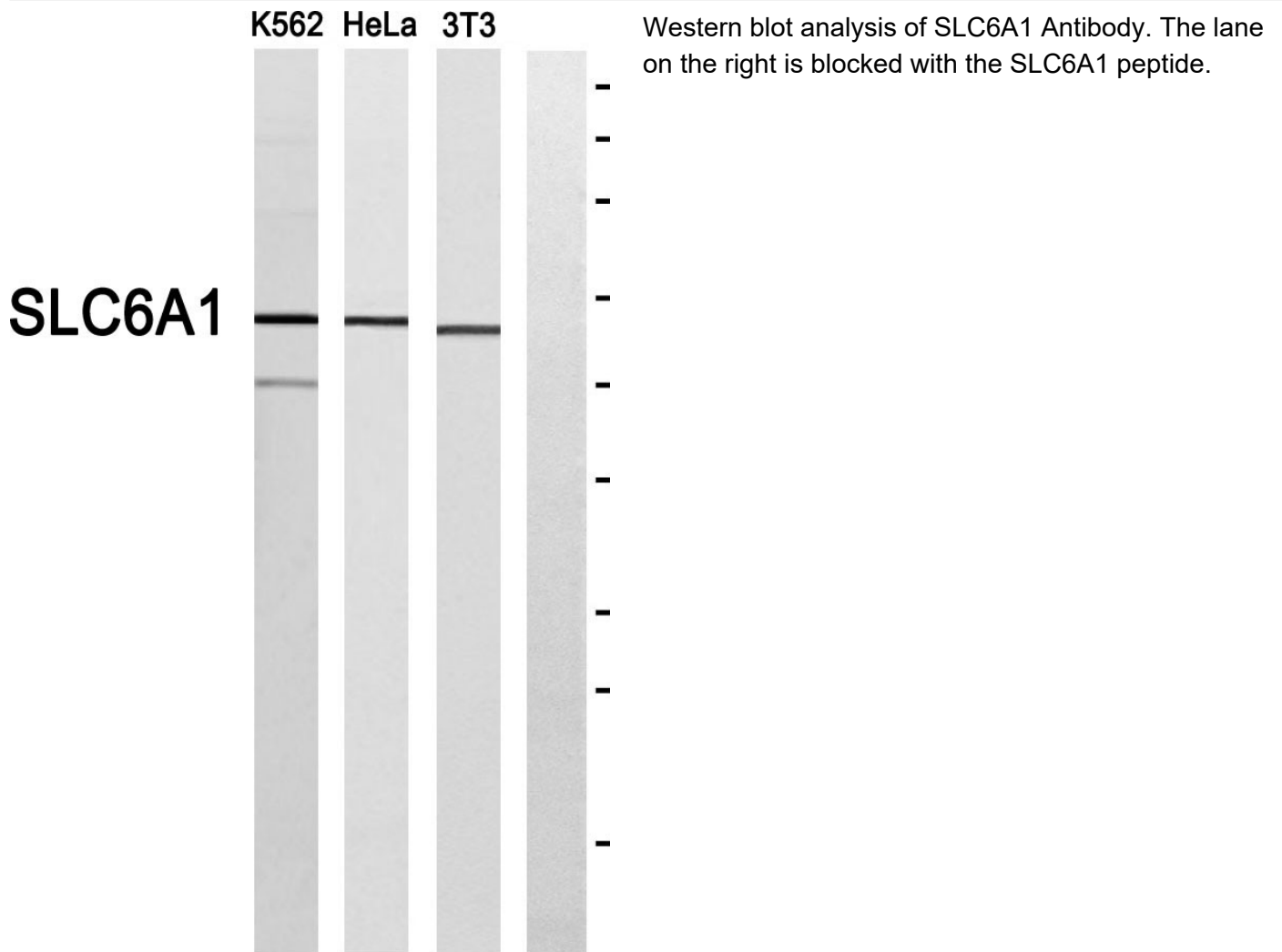
Nanjing BYabscience technology Co.,Ltd



Background	The SLC6A1 gene encodes a gamma-aminobutyric acid (GABA) transporter, which removes GABA from the synaptic cleft (Hirunsatit et al., 2009 [PubMed 19077666]).[supplied by OMIM, Jul 2009],
matters needing attention	Avoid repeated freezing and thawing!
Usage suggestions	This product can be used in immunological reaction related experiments. For more information, please consult technical personnel.



Products Images



Western blot analysis of the lysates from HeLa cells using SLC6A1 antibody.

Nanjing BYabs science technology Co.,Ltd

网址: www.njbybio.com

官方热线: 025-5229-8998

监督电话: 15950492658



Nanjing BYabscience technology Co.,Ltd

网址: www.njbybio.com

官方热线: 025-5229-8998

监督电话: 15950492658