



ALS2CR8 Polyclonal Antibody

Catalog No	BYab-12683
Isotype	IgG
Reactivity	Human;Rat;Mouse;
Applications	WB;IHC;IF;ELISA
Gene Name	ALS2CR8
Protein Name	Amyotrophic lateral sclerosis 2 chromosomal region candidate gene 8 protein
Immunogen	The antiserum was produced against synthesized peptide derived from human ALS2CR8. AA range:311-360
Specificity	ALS2CR8 Polyclonal Antibody detects endogenous levels of ALS2CR8 protein.
Formulation	Liquid in PBS containing 50% glycerol, 0.5% BSA and 0.02% sodium azide.
Source	Polyclonal, Rabbit,IgG
Purification	The antibody was affinity-purified from rabbit antiserum by affinity-chromatography using epitope-specific immunogen.
Dilution	WB: 1/500 - 1/2000. IHC: 1/100 - 1/300. ELISA: 1/40000.. IF 1:50-200
Concentration	1 mg/ml
Purity	≥90%
Storage Stability	-20°C/1 year
Synonyms	ALS2CR8; CARF; Amyotrophic lateral sclerosis 2 chromosomal region candidate gene 8 protein; Calcium-response factor; CaRF; Testis development protein NYD-SP24
Observed Band	85kD
Cell Pathway	Nucleus .
Tissue Specificity	Colon,Lymph node,Testis,
Function	function:May be a transcription factor.,
Background	function:May be a transcription factor.,
matters needing attention	Avoid repeated freezing and thawing!

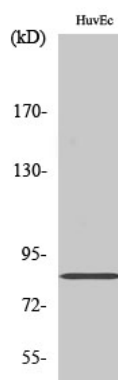
Nanjing BYabscience technology Co.,Ltd



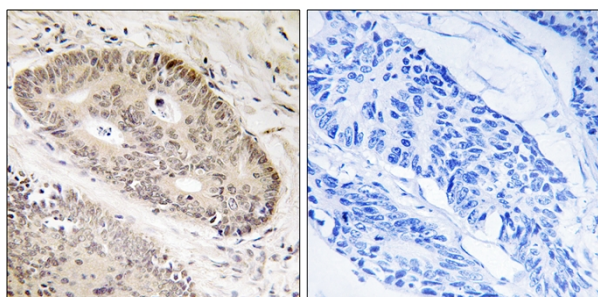
Usage suggestions

This product can be used in immunological reaction related experiments. For more information, please consult technical personnel.

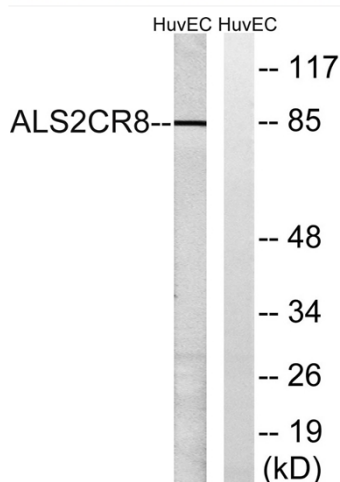
Products Images



Western Blot analysis of various cells using ALS2CR8 Polyclonal Antibody cells nucleus extracted by Minute TM Cytoplasmic and Nuclear Fractionation kit (SC-003, Inventbiotech, MN, USA).



Immunohistochemistry analysis of paraffin-embedded human lung carcinoma tissue, using ALS2CR8 Antibody. The picture on the right is blocked with the synthesized peptide.



Western blot analysis of lysates from HUVEC cells, using ALS2CR8 Antibody. The lane on the right is blocked with the synthesized peptide.

Nanjing BYabscience technology Co.,Ltd

网址: www.njbybio.com

官方热线: 025-5229-8998

监督电话: 15950492658