



LMOD2 rabbit pAb

Catalog No	BYab-12059
Isotype	IgG
Reactivity	Human; Mouse;Rat
Applications	WB;ELISA;IHC
Gene Name	LMOD2
Protein Name	LMOD2
Immunogen	Synthesized peptide derived from human LMOD2 AA range: 279-329
Specificity	This antibody detects endogenous levels of LMOD2 at Human/Mouse/Rat
Formulation	Liquid in PBS containing 50% glycerol, 0.5% BSA and 0.02% sodium azide.
Source	Polyclonal, Rabbit,IgG
Purification	The antibody was affinity-purified from rabbit serum by affinity-chromatography using specific immunogen.
Dilution	WB 1:500-2000;IHC-p 1:50-300; ELISA 2000-20000
Concentration	1 mg/ml
Purity	≥90%
Storage Stability	-20°C/1 year
Synonyms	
Observed Band	
Cell Pathway	Cytoplasm, myofibril, sarcomere . Cytoplasm, myofibril . Cytoplasm, myofibril, sarcomere, M line . Cytoplasm, cytoskeleton . Colocalizes with actin filaments in sarcomeres. Detected close to the M line. .
Tissue Specificity	Specifically expressed in heart and skeletal muscles, with higher levels in heart (at protein level). Not expressed in other tissues.
Function	function:May block the elongation and depolymerization of the actin filaments at the pointed end.,sequence caution:Translation N-terminally shortened.,similarity:Belongs to the tropomodulin family.,similarity:Contains 1 WH2 domain.,subunit:Able to bind to tropomyosin.,tissue specificity:Specifically expressed in heart and skeletal muscles. Not expressed in other tissues.,
Background	

Nanjing BYabscience technology Co.,Ltd



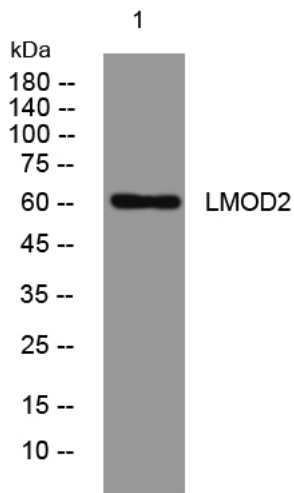
matters needing attention

Avoid repeated freezing and thawing!

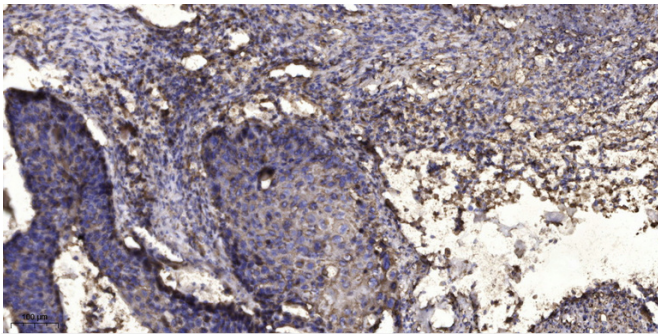
Usage suggestions

This product can be used in immunological reaction related experiments. For more information, please consult technical personnel.

Products Images



Western blot analysis of lysates from DU145 cells, primary antibody was diluted at 1:1000, 4° over night



Immunohistochemical analysis of paraffin-embedded human Squamous cell carcinoma of lung. 1, Antibody was diluted at 1:200(4° overnight). 2, Tris-EDTA,pH9.0 was used for antigen retrieval. 3,Secondary antibody was diluted at 1:200(room temperature, 45min).