



CISY rabbit pAb

Catalog No	BYab-11601
Isotype	IgG
Reactivity	Human; Mouse;Rat
Applications	WB
Gene Name	CS
Protein Name	CISY
Immunogen	Synthesized peptide derived from human CISY AA range: 272-322
Specificity	This antibody detects endogenous levels of CISY at Human/Mouse/Rat
Formulation	Liquid in PBS containing 50% glycerol, 0.5% BSA and 0.02% sodium azide.
Source	Polyclonal, Rabbit,IgG
Purification	The antibody was affinity-purified from rabbit serum by affinity-chromatography using specific immunogen.
Dilution	WB 1: 500-2000
Concentration	1 mg/ml
Purity	≥90%
Storage Stability	-20°C/1 year
Synonyms	
Observed Band	
Cell Pathway	Mitochondrion matrix.
Tissue Specificity	
Function	catalytic activity:Acetyl-CoA + H(2)O + oxaloacetate = citrate + CoA.,miscellaneous:Citrate synthase is found in nearly all cells capable of oxidative metabolism.,online information:Citrate synthase entry,pathway:Carbohydrate metabolism; tricarboxylic acid cycle.,sequence caution:Intron retention.,similarity:Belongs to the citrate synthase family.,subunit:Homodimer.,
Background	The protein encoded by this gene is a Krebs tricarboxylic acid cycle enzyme that catalyzes the synthesis of citrate from oxaloacetate and acetyl coenzyme A. The enzyme is found in nearly all cells capable of oxidative metablism. This protein is nuclear encoded and transported into the mitochondrial matrix, where the mature form is found. [provided by RefSeq, Jul 2008],

Nanjing BYabscience technology Co.,Ltd



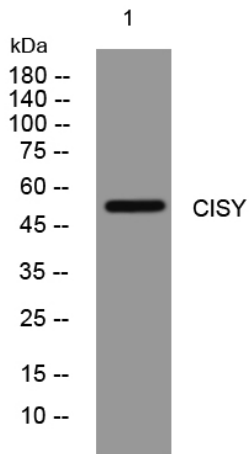
matters needing attention

Avoid repeated freezing and thawing!

Usage suggestions

This product can be used in immunological reaction related experiments. For more information, please consult technical personnel.

Products Images



Western blot analysis of lysates from SW480 cells, primary antibody was diluted at 1:1000, 4° over night