



SNPC3 Polyclonal Antibody

Catalog No	BYab-06541
Isotype	IgG
Reactivity	Human;Rat;Mouse;
Applications	WB;ELISA
Gene Name	SNAPC3 SNAP50
Protein Name	snRNA-activating protein complex subunit 3 (SNAPc subunit 3) (Proximal sequence element-binding transcription factor subunit beta) (PSE-binding factor subunit beta) (PTF subunit beta) (Small nuclear R
Immunogen	Synthesized peptide derived from part region of human protein
Specificity	SNPC3 Polyclonal Antibody detects endogenous levels of protein.
Formulation	Liquid in PBS containing 50% glycerol, and 0.02% sodium azide.
Source	Polyclonal, Rabbit,IgG
Purification	The antibody was affinity-purified from rabbit antiserum by affinity-chromatography using epitope-specific immunogen.
Dilution	WB 1:500-2000 ELISA 1:5000-20000
Concentration	1 mg/ml
Purity	≥90%
Storage Stability	-20°C/1 year
Synonyms	
Observed Band	45kD
Cell Pathway	Nucleus.
Tissue Specificity	Skin,Teratocarcinoma,
Function	function:Part of the SNAPc complex required for the transcription of both RNA polymerase II and III small-nuclear RNA genes. Binds to the proximal sequence element (PSE), a non-TATA-box basal promoter element common to these 2 types of genes. Recruits TBP and BRF2 to the U6 snRNA TATA box.,PTM:Phosphorylated upon DNA damage, probably by ATM or ATR.,subunit:Part of the SNAPc complex composed of 5 subunits: SNAPC1, SNAPC2, SNAPC3, SNAPC4 and SNAPC5. SNAPC3 interacts with SNAPC1.,
Background	function:Part of the SNAPc complex required for the transcription of both RNA polymerase II and III small-nuclear RNA genes. Binds to the proximal sequence element (PSE), a non-TATA-box basal promoter element common to these 2

Nanjing BYabscience technology Co.,Ltd



types of genes. Recruits TBP and BRF2 to the U6 snRNA TATA box.,PTM:Phosphorylated upon DNA damage, probably by ATM or ATR.,subunit:Part of the SNAPc complex composed of 5 subunits: SNAPC1, SNAPC2, SNAPC3, SNAPC4 and SNAPC5. SNAPC3 interacts with SNAPC1.,

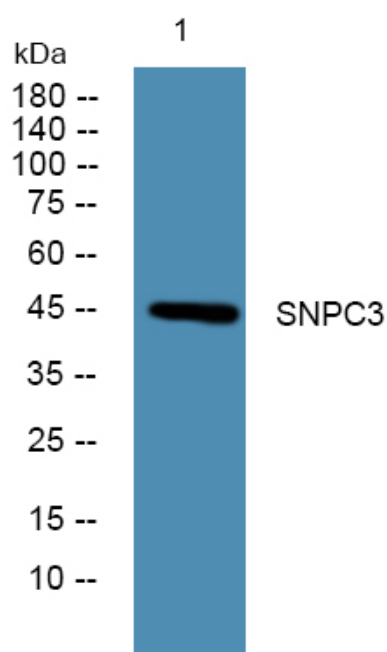
matters needing attention

Avoid repeated freezing and thawing!

Usage suggestions

This product can be used in immunological reaction related experiments. For more information, please consult technical personnel.

Products Images



Western blot analysis of lysates from Jarkat cells, primary antibody was diluted at 1:1000, 4° over night