



MKX Polyclonal Antibody

Catalog No	BYab-06528
Isotype	IgG
Reactivity	Human;Mouse
Applications	WB;ELISA
Gene Name	MKX C10orf48 IRXL1
Protein Name	Homeobox protein Mohawk
Immunogen	Synthesized peptide derived from human protein . at AA range: 250-330
Specificity	MKX Polyclonal Antibody detects endogenous levels of protein.
Formulation	Liquid in PBS containing 50% glycerol, and 0.02% sodium azide.
Source	Polyclonal, Rabbit,IgG
Purification	The antibody was affinity-purified from rabbit antiserum by affinity-chromatography using epitope-specific immunogen.
Dilution	WB 1:500-2000 ELISA 1:5000-20000
Concentration	1 mg/ml
Purity	≥90%
Storage Stability	-20°C/1 year
Synonyms	
Observed Band	38kD
Cell Pathway	Nucleus .
Tissue Specificity	Brain,
Function	function:May act as a morphogenetic regulator of cell adhesion.,similarity:Belongs to the TALE/IRO homeobox family.,similarity:Contains 1 homeobox DNA-binding domain.,
Background	The protein encoded by this gene is an IRX family-related homeobox protein that may play a role in cell adhesion. Studies in mice suggest that this protein may be a regulator of tendon development. Two transcript variants encoding the same protein have been found for this gene.[provided by RefSeq, Jun 2011],
matters needing attention	Avoid repeated freezing and thawing!

Nanjing BYabscience technology Co.,Ltd

网址: www.njbybio.com

官方热线: 025-5229-8998

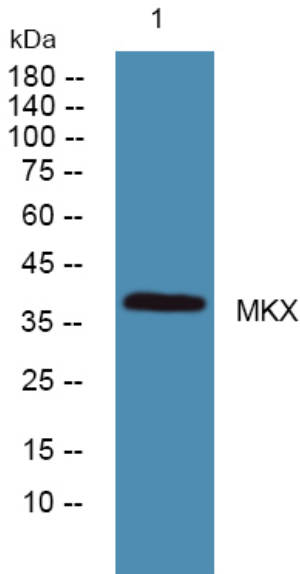
监督电话: 15950492658



Usage suggestions

This product can be used in immunological reaction related experiments. For more information, please consult technical personnel.

Products Images



Western blot analysis of lysates from SH-SY5Y cells, primary antibody was diluted at 1:1000, 4° over night