



CD5L Polyclonal Antibody

Catalog No	BYab-06442
Isotype	IgG
Reactivity	Human;Mouse
Applications	WB;ELISA
Gene Name	CD5L API6 UNQ203/PRO229
Protein Name	CD5 antigen-like (CT-2) (IgM-associated peptide) (SP-alpha)
Immunogen	Synthesized peptide derived from human protein . at AA range: 220-300
Specificity	CD5L Polyclonal Antibody detects endogenous levels of protein.
Formulation	Liquid in PBS containing 50% glycerol, and 0.02% sodium azide.
Source	Polyclonal, Rabbit,IgG
Purification	The antibody was affinity-purified from rabbit antiserum by affinity-chromatography using epitope-specific immunogen.
Dilution	WB 1:500-2000 ELISA 1:5000-20000
Concentration	1 mg/ml
Purity	≥90%
Storage Stability	-20°C/1 year
Synonyms	
Observed Band	38kD
Cell Pathway	Secreted . Cytoplasm . Secreted by macrophages and circulates in the blood (PubMed:24223991, PubMed:24804991). Transported in the cytoplasm via CD36-mediated endocytosis (By similarity). .
Tissue Specificity	Expressed in spleen, lymph node, thymus, bone marrow, and fetal liver, but not in non-lymphoid tissues.
Function	function:May play a role in the regulation of the immune system. Seems to play a role as an inhibitor of apoptosis.,similarity:Contains 3 SRCR domains.,subunit:Associated with IgM.,tissue specificity:Expressed in spleen, lymph node, thymus, bone marrow, and fetal liver, but not in non-lymphoid tissues.,
Background	function:May play a role in the regulation of the immune system. Seems to play a role as an inhibitor of apoptosis.,similarity:Contains 3 SRCR domains.,subunit:Associated with IgM.,tissue specificity:Expressed in spleen, lymph node, thymus, bone marrow, and fetal liver, but not in non-lymphoid tissues.,

Nanjing BYabscience technology Co.,Ltd



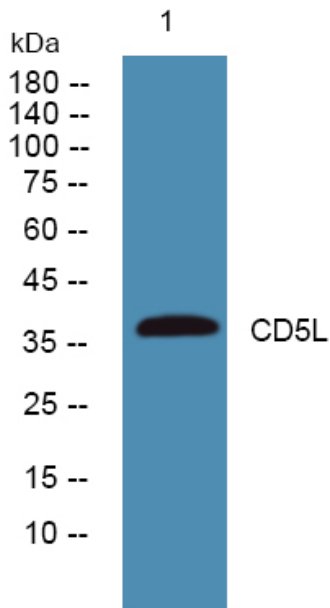
matters needing attention

Avoid repeated freezing and thawing!

Usage suggestions

This product can be used in immunological reaction related experiments. For more information, please consult technical personnel.

Products Images



Western blot analysis of lysates from SW480 cells, primary antibody was diluted at 1:1000, 4° over night