



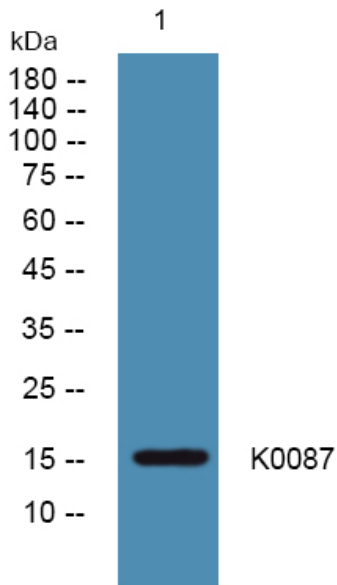
K0087 Polyclonal Antibody

Catalog No	BYab-06373
Isotype	IgG
Reactivity	Human;Rat;Mouse;
Applications	WB;ELISA
Gene Name	KIAA0087 HA1002
Protein Name	Uncharacterized protein KIAA0087
Immunogen	Synthesized peptide derived from human protein . at AA range: 20-100
Specificity	K0087 Polyclonal Antibody detects endogenous levels of protein.
Formulation	Liquid in PBS containing 50% glycerol, and 0.02% sodium azide.
Source	Polyclonal, Rabbit,IgG
Purification	The antibody was affinity-purified from rabbit antiserum by affinity-chromatography using epitope-specific immunogen.
Dilution	WB 1:500-2000 ELISA 1:5000-20000
Concentration	1 mg/ml
Purity	≥90%
Storage Stability	-20°C/1 year
Synonyms	
Observed Band	15kD
Cell Pathway	
Tissue Specificity	Bone marrow,
Function	PTM:Phosphorylated upon DNA damage, probably by ATM or ATR.,
Background	PTM:Phosphorylated upon DNA damage, probably by ATM or ATR.,
matters needing attention	Avoid repeated freezing and thawing!
Usage suggestions	This product can be used in immunological reaction related experiments. For more information, please consult technical personnel.

Nanjing BYabscience technology Co.,Ltd



Products Images



Western blot analysis of lysates from PC12 cells,
primary antibody was diluted at 1:1000, 4° over night