



UB2Q2 Polyclonal Antibody

Catalog No	BYab-06366
Isotype	IgG
Reactivity	Human;Mouse
Applications	WB;ELISA
Gene Name	UBE2Q2
Protein Name	Ubiquitin-conjugating enzyme E2 Q2 (EC 6.3.2.19) (Ubiquitin carrier protein Q2) (Ubiquitin-protein ligase Q2)
Immunogen	Synthesized peptide derived from part region of human protein
Specificity	UB2Q2 Polyclonal Antibody detects endogenous levels of protein.
Formulation	Liquid in PBS containing 50% glycerol, and 0.02% sodium azide.
Source	Polyclonal, Rabbit,IgG
Purification	The antibody was affinity-purified from rabbit antiserum by affinity-chromatography using epitope-specific immunogen.
Dilution	WB 1:500-2000 ELISA 1:5000-20000
Concentration	1 mg/ml
Purity	≥90%
Storage Stability	-20°C/1 year
Synonyms	
Observed Band	41kD
Cell Pathway	Cytoplasm .
Tissue Specificity	Detected in hypopharyngeal head and neck squamous cell carcinoma, in tumor masses and invasive epithelium.
Function	catalytic activity:ATP + ubiquitin + protein lysine = AMP + diphosphate + protein N-ubiquityllysine.,function:Catalyzes the covalent attachment of ubiquitin to other proteins.,pathway:Protein modification; protein ubiquitination.,similarity:Belongs to the ubiquitin-conjugating enzyme family.,tissue specificity:Detected in hypopharyngeal head and neck squamous cell carcinoma, in tumor masses and invasive epithelium.,
Background	catalytic activity:ATP + ubiquitin + protein lysine = AMP + diphosphate + protein N-ubiquityllysine.,function:Catalyzes the covalent attachment of ubiquitin to other proteins.,pathway:Protein modification; protein ubiquitination.,similarity:Belongs to the ubiquitin-conjugating enzyme family.,tissue specificity:Detected in hypopharyngeal head and neck squamous cell carcinoma, in tumor masses and

Nanjing BYabs science technology Co.,Ltd



invasive epithelium.,

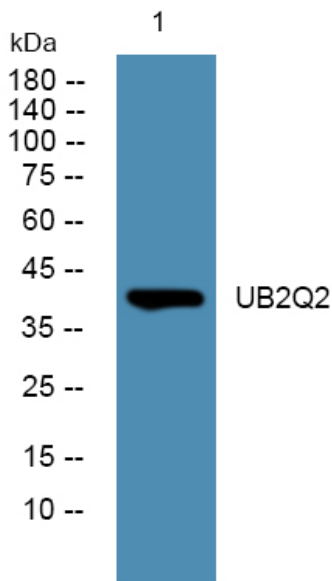
matters needing attention

Avoid repeated freezing and thawing!

Usage suggestions

This product can be used in immunological reaction related experiments. For more information, please consult technical personnel.

Products Images



Western blot analysis of lysates from U2OS cells, primary antibody was diluted at 1:1000, 4° over night.