



SCRT1 Polyclonal Antibody

| | |
|--------------------|--|
| Catalog No | BYab-06311 |
| Isotype | IgG |
| Reactivity | Human;Mouse |
| Applications | WB;ELISA |
| Gene Name | SCRT1 |
| Protein Name | Transcriptional repressor scratch 1 (Scratch homolog 1 zinc finger protein) (SCRT) (Scratch 1) (hScrt) |
| Immunogen | Synthesized peptide derived from part region of human protein |
| Specificity | SCRT1 Polyclonal Antibody detects endogenous levels of protein. |
| Formulation | Liquid in PBS containing 50% glycerol, and 0.02% sodium azide. |
| Source | Polyclonal, Rabbit,IgG |
| Purification | The antibody was affinity-purified from rabbit antiserum by affinity-chromatography using epitope-specific immunogen. |
| Dilution | WB 1:500-2000 ELISA 1:5000-20000 |
| Concentration | 1 mg/ml |
| Purity | ≥90% |
| Storage Stability | -20°C/1 year |
| Synonyms | |
| Observed Band | 38kD |
| Cell Pathway | Nucleus . |
| Tissue Specificity | Brain specific. |
| Function | domain:The N-terminal non zinc-finger region mediates the repressor activity.,function:Transcriptional repressor that binds E-box motif CAGGTG. Can modulate the action of basic helix-loop-helix (bHLH) transcription factors, critical for neuronal differentiation.,similarity:Belongs to the snail C2H2-type zinc-finger protein family.,similarity:Contains 5 C2H2-type zinc fingers.,tissue specificity:Brain specific., |
| Background | This gene encodes a C2H2-type zinc finger transcriptional repressor that binds to E-box motifs. The encoded protein may promote neural differentiation and may be involved in cancers with neuroendocrine features. [provided by RefSeq, Jul 2013], |

Nanjing BYabscience technology Co.,Ltd



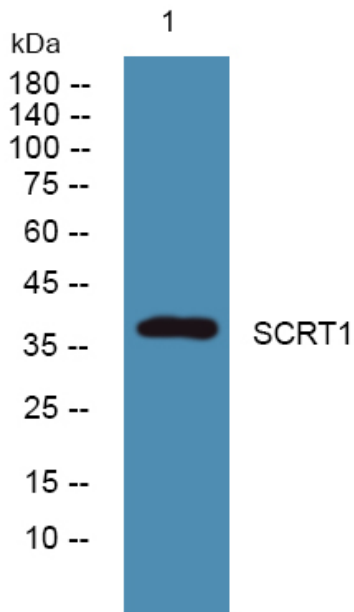
matters needing attention

Avoid repeated freezing and thawing!

Usage suggestions

This product can be used in immunological reaction related experiments. For more information, please consult technical personnel.

Products Images



Western blot analysis of lysates from DU145 cells, primary antibody was diluted at 1:1000, 4° over night