



TLX1 Polyclonal Antibody

Catalog No	BYab-06270
Isotype	IgG
Reactivity	Human;Mouse
Applications	WB;ELISA
Gene Name	TLX1 HOX11 TCL3
Protein Name	T-cell leukemia homeobox protein 1 (Homeobox protein Hox-11) (Proto-oncogene TCL-3) (T-cell leukemia/lymphoma protein 3)
Immunogen	Synthesized peptide derived from part region of human protein
Specificity	TLX1 Polyclonal Antibody detects endogenous levels of protein.
Formulation	Liquid in PBS containing 50% glycerol, and 0.02% sodium azide.
Source	Polyclonal, Rabbit,IgG
Purification	The antibody was affinity-purified from rabbit antiserum by affinity-chromatography using epitope-specific immunogen.
Dilution	WB 1:500-2000 ELISA 1:5000-20000
Concentration	1 mg/ml
Purity	≥90%
Storage Stability	-20°C/1 year
Synonyms	
Observed Band	36kD
Cell Pathway	Nucleus .
Tissue Specificity	Pooled,
Function	disease:A chromosomal aberration involving TLX1 may be a cause of a form of T-cell acute lymphoblastic leukemia (T-ALL). Translocation t(10;14)(q24;q11) with TCRD.,function:Controls the genesis of the spleen. Binds to the DNA sequence 5'-GGCGGTAAGTGG-3',miscellaneous:TLX1 is oriented in a head-to-head manner with TDI. Both genes share the same promoter with robust bidirectional activity.,similarity:Contains 1 homeobox DNA-binding domain.,
Background	This gene encodes a nuclear transcription factor that belongs to the NK-linked or NK-like (NKL) subfamily of homeobox genes. The encoded protein is required for normal development of the spleen during embryogenesis. This protein is also involved in specification of neuronal cell fates. Ectopic expression of this gene due to chromosomal translocations is associated with certain T-cell acute

Nanjing BYabs science technology Co.,Ltd



lymphoblastic leukemias. Alternate splicing results in multiple transcript variants.
[provided by RefSeq, Sep 2010],

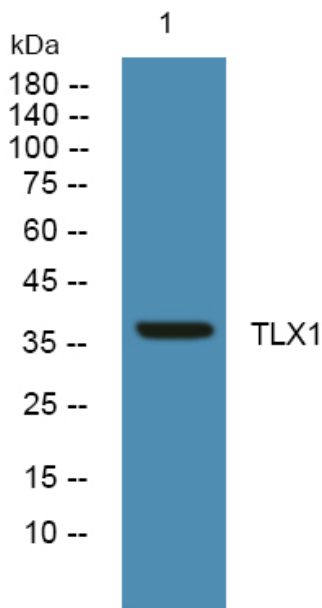
matters needing attention

Avoid repeated freezing and thawing!

Usage suggestions

This product can be used in immunological reaction related experiments. For more information, please consult technical personnel.

Products Images



Western blot analysis of lysates from HCT116 cells,
primary antibody was diluted at 1:1000, 4°over night