



SYT12 Polyclonal Antibody

Catalog No	BYab-06255
Isotype	IgG
Reactivity	Human;Rat;Mouse
Applications	WB;ELISA
Gene Name	SYT12
Protein Name	Synaptotagmin-12 (Synaptotagmin XII) (SytXII)
Immunogen	Synthesized peptide derived from part region of human protein
Specificity	SYT12 Polyclonal Antibody detects endogenous levels of protein.
Formulation	Liquid in PBS containing 50% glycerol, and 0.02% sodium azide.
Source	Polyclonal, Rabbit,IgG
Purification	The antibody was affinity-purified from rabbit antiserum by affinity-chromatography using epitope-specific immunogen.
Dilution	WB 1:500-2000 ELISA 1:5000-20000
Concentration	1 mg/ml
Purity	≥90%
Storage Stability	-20°C/1 year
Synonyms	
Observed Band	46kD
Cell Pathway	Cytoplasmic vesicle, secretory vesicle, synaptic vesicle membrane ; Single-pass membrane protein .
Tissue Specificity	Brain,
Function	function:May be involved in Ca(2+)-dependent exocytosis of secretory vesicles through Ca(2+) and phospholipid binding to the C2 domain or may serve as Ca(2+) sensors in the process of vesicular trafficking and exocytosis.,similarity:Belongs to the synaptotagmin family.,similarity:Contains 2 C2 domains.,subunit:Homodimer. Can also form heterodimers.,
Background	synaptotagmin 12(SYT12) Homo sapiens This gene is a member of the synaptotagmin gene family and encodes a protein similar to other family members that mediate calcium-dependent regulation of membrane trafficking in synaptic transmission. Studies of the orthologous gene in rat have shown that the encoded protein selectively modulates spontaneous synaptic-vesicle exocytosis and may also be involved in regulating calcium independent secretion in nonneuronal cells.

Nanjing BYabscience technology Co.,Ltd



Alternative splicing results in multiple transcript variants. The gene has previously been referred to as synaptotagmin XI but has been renamed synaptotagmin XII to be standard with mouse and rat official nomenclature.[provided by RefSeq, Apr 2010],

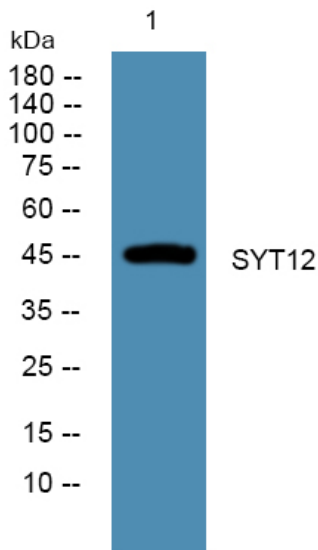
matters needing attention

Avoid repeated freezing and thawing!

Usage suggestions

This product can be used in immunological reaction related experiments. For more information, please consult technical personnel.

Products Images



Western blot analysis of lysates from K562 cells, primary antibody was diluted at 1:1000, 4°over night