



SIKE1 Polyclonal Antibody

Catalog No	BYab-06247
Isotype	IgG
Reactivity	Human;Rat;Mouse
Applications	WB;ELISA
Gene Name	SIKE1 SIKE
Protein Name	Suppressor of IKBKE 1 (Suppressor of IKK-epsilon)
Immunogen	Synthesized peptide derived from part region of human protein
Specificity	SIKE1 Polyclonal Antibody detects endogenous levels of protein.
Formulation	Liquid in PBS containing 50% glycerol, and 0.02% sodium azide.
Source	Polyclonal, Rabbit,IgG
Purification	The antibody was affinity-purified from rabbit antiserum by affinity-chromatography using epitope-specific immunogen.
Dilution	WB 1:500-2000 ELISA 1:5000-20000
Concentration	1 mg/ml
Purity	≥90%
Storage Stability	-20°C/1 year
Synonyms	
Observed Band	22kD
Cell Pathway	Cytoplasm .
Tissue Specificity	Widely expressed. Expressed in brain, heart, skeletal muscle, colon, thymus, spleen, kidney, liver, small intestine, placenta, lung and leukocytes. Present in all cell lines tested (at protein level).
Function	
Background	SIKE interacts with IKK-epsilon (IKBKE; MIM 605048) and TBK1 (MIM 604834) and acts as a suppressor of TLR3 (MIM 603029) and virus-triggered interferon activation pathways (Huang et al., 2005 [PubMed 16281057]).[supplied by OMIM, Mar 2008],
matters needing attention	Avoid repeated freezing and thawing!

Nanjing BYabscience technology Co.,Ltd

网址: www.njbybio.com

官方热线: 025-5229-8998

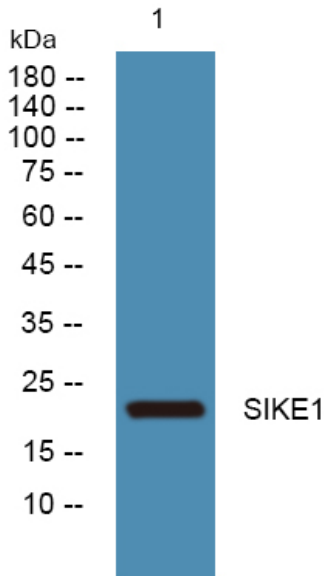
监督电话: 15950492658



Usage suggestions

This product can be used in immunological reaction related experiments. For more information, please consult technical personnel.

Products Images



Western blot analysis of lysates from U2OS cells, primary antibody was diluted at 1:1000, 4° over night