



RAB28 Polyclonal Antibody

Catalog No	BYab-06045
Isotype	IgG
Reactivity	Human;Rat;Mouse
Applications	WB;ELISA
Gene Name	RAB28
Protein Name	Ras-related protein Rab-28
Immunogen	Synthesized peptide derived from human protein . at AA range: 80-160
Specificity	RAB28 Polyclonal Antibody detects endogenous levels of protein.
Formulation	Liquid in PBS containing 50% glycerol, and 0.02% sodium azide.
Source	Polyclonal, Rabbit,IgG
Purification	The antibody was affinity-purified from rabbit antiserum by affinity-chromatography using epitope-specific immunogen.
Dilution	WB 1:500-2000 ELISA 1:5000-20000
Concentration	1 mg/ml
Purity	≥90%
Storage Stability	-20°C/1 year
Synonyms	
Observed Band	24kD
Cell Pathway	Cell membrane ; Lipid-anchor ; Cytoplasmic side . Cytoplasm, cytoskeleton, cilium basal body. Expressed in the basal body and ciliary rootlet of the photoreceptors. .
Tissue Specificity	Isoform S is detected in most tissues investigated: cortex, liver, kidney, skeletal muscle, adipose tissue, testis, urothelium, lung, bone marrow and retinal pigment epithelium (RPE). Isoform L 2 is widely and abundantly expressed all tissues. Isoform 3 is highly expressed in heart, lung, bone marrow, retina, brain, and RPE.
Function	similarity:Belongs to the small GTPase superfamily. Rab family.,tissue specificity:Isoform S is detected in most tissues investigated (cortex, liver, kidney, skeletal muscle, adipose tissue, testis and urothelium), whereas isoform L is predominant in testis.,
Background	This gene encodes a member of the Rab subfamily of Ras-related small GTPases. The encoded protein may be involved in regulating intracellular trafficking. Alternative splicing results in multiple transcript variants. Pseudogenes of this gene are found on chromosomes 9 and X. [provided by RefSeq, Apr 2009],

Nanjing BYabscience technology Co.,Ltd



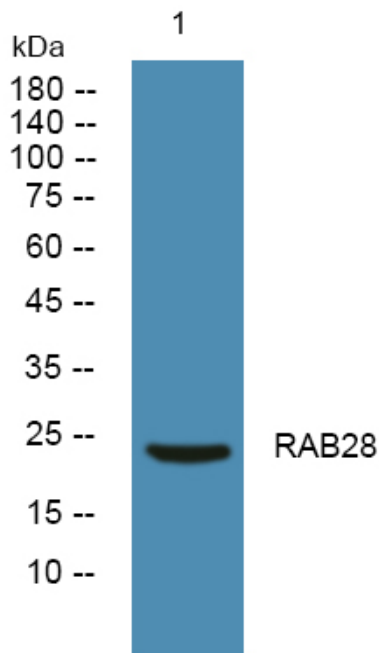
matters needing attention

Avoid repeated freezing and thawing!

Usage suggestions

This product can be used in immunological reaction related experiments. For more information, please consult technical personnel.

Products Images



Western blot analysis of lysates from A431 cells, primary antibody was diluted at 1:1000, 4° over night