



# RAB21 Polyclonal Antibody

<b>Catalog No</b>	BYab-06041
<b>Isotype</b>	IgG
<b>Reactivity</b>	Human;Rat;Mouse
<b>Applications</b>	WB;ELISA
<b>Gene Name</b>	RAB21 KIAA0118
<b>Protein Name</b>	Ras-related protein Rab-21
<b>Immunogen</b>	Synthesized peptide derived from human protein . at AA range: 60-140
<b>Specificity</b>	RAB21 Polyclonal Antibody detects endogenous levels of protein.
<b>Formulation</b>	Liquid in PBS containing 50% glycerol, and 0.02% sodium azide.
<b>Source</b>	Polyclonal, Rabbit,IgG
<b>Purification</b>	The antibody was affinity-purified from rabbit antiserum by affinity-chromatography using epitope-specific immunogen.
<b>Dilution</b>	WB 1:500-2000 ELISA 1:5000-20000
<b>Concentration</b>	1 mg/ml
<b>Purity</b>	≥90%
<b>Storage Stability</b>	-20°C/1 year
<b>Synonyms</b>	
<b>Observed Band</b>	24kD
<b>Cell Pathway</b>	Endoplasmic reticulum membrane ; Lipid-anchor . Golgi apparatus, trans-Golgi network . Golgi apparatus membrane . Early endosome membrane . Cytoplasmic vesicle membrane . Cleavage furrow . Cell projection, neuron projection . Colocalizes with ANKRD27 and VAMP7 in neurites (By similarity). In nonpolarized epithelial Caco-2 cells, found in the endoplasmic reticulum; in polarized cells, observed in vesicles in the apical cytoplasm (PubMed:10887961). During mitosis, in mid-telophase, localized in the ingressing cleavage furrow (PubMed:18804435). In late telophase, detected at the opposite poles of the daughter cells, in vesicles at the base of lamellipodia formed by the separating daughter cells (PubMed:18804435). .
<b>Tissue Specificity</b>	Widely expressed. In jejunal tissue, predominantly expressed in the apical region of the epithelial cell layer of the villi, weak expression, if any, in the crypt epithelium. Capillary endothelium and some cell types in the lamina propria also show expression.
<b>Function</b>	function:Regulates integrin internalization and recycling, but does not influence

**Nanjing BYabscience technology Co.,Ltd**



the traffic of endosomally translocated receptors in general. As a result, may regulate cell adhesion and migration (By similarity). During the mitosis of adherent cells, controls the endosomal trafficking of integrins which is required for the successful completion of cytokinesis.,similarity:Belongs to the small GTPase superfamily. Rab family.,subcellular location:In nonpolarized epithelial Caco-2 cells, found in the endoplasmic reticulum; in polarized cells, observed in vesicles in the apical cytoplasm. During mitosis, in mid-telophase, localized in the ingressing cleavage furrow. In late telophase, detected at the opposite poles of the daughter cells, in vesicles at the base of lamellipodia formed by the separating daughter cells.,subunit:Interacts with the cytoplasmic tail of integrins ITGA1, ITGA2, ITG

## Background

This gene belongs to the Rab family of monomeric GTPases, which are involved in the control of cellular membrane traffic. The encoded protein plays a role in the targeted trafficking of integrins via its association with integrin alpha tails. As a consequence, the encoded protein is involved in the regulation of cell adhesion and migration. Expression of this gene is associated with a poor prognosis for glioma patients. This gene is downregulated by the tumor suppressor miR-200b, and miRNA-200b is itself downregulated in glioma tissues. [provided by RefSeq, Nov 2015],

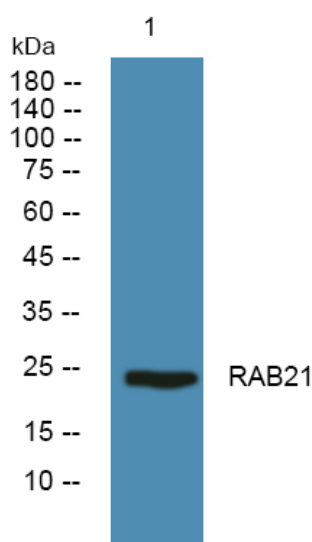
## matters needing attention

Avoid repeated freezing and thawing!

## Usage suggestions

This product can be used in immunological reaction related experiments. For more information, please consult technical personnel.

## Products Images



Nanjing BYabscience technology Co.,Ltd

网址: [www.njbybio.com](http://www.njbybio.com)

官方热线: 025-5229-8998

监督电话: 15950492658