



PAIRB Polyclonal Antibody

Catalog No	BYab-05937
Isotype	IgG
Reactivity	Human;Rat;Mouse
Applications	WB;ELISA
Gene Name	SERBP1 PAIRBP1 CGI-55
Protein Name	Plasminogen activator inhibitor 1 RNA-binding protein (PAI1 RNA-binding protein 1) (PAI-RBP1) (SERPINE1 mRNA-binding protein 1)
Immunogen	Synthesized peptide derived from human protein . at AA range: 60-140
Specificity	PAIRB Polyclonal Antibody detects endogenous levels of protein.
Formulation	Liquid in PBS containing 50% glycerol, and 0.02% sodium azide.
Source	Polyclonal, Rabbit,IgG
Purification	The antibody was affinity-purified from rabbit antiserum by affinity-chromatography using epitope-specific immunogen.
Dilution	WB 1:500-2000 ELISA 1:5000-20000
Concentration	1 mg/ml
Purity	≥90%
Storage Stability	-20°C/1 year
Synonyms	
Observed Band	44kD
Cell Pathway	Cytoplasm . Nucleus . Cytoplasm, perinuclear region .
Tissue Specificity	Expressed at high level in the heart, skeletal muscle and kidney, and at low levels in placenta, liver and brain.
Function	function:May play a role in the regulation of mRNA stability. Binds to the 3'-most 134 nt of the SERPINE1/PAI1 mRNA, a region which confers cyclic nucleotide regulation of message decay.,subcellular location:Also found in perinuclear regions.,subunit:Interacts with CHD3 and TDRD3.,tissue specificity:Expressed at high level in the heart, skeletal muscle and kidney, and at low levels in placenta, liver and brain.,
Background	function:May play a role in the regulation of mRNA stability. Binds to the 3'-most 134 nt of the SERPINE1/PAI1 mRNA, a region which confers cyclic nucleotide regulation of message decay.,subcellular location:Also found in perinuclear regions.,subunit:Interacts with CHD3 and TDRD3.,tissue specificity:Expressed at high level in the heart, skeletal muscle and kidney, and at low levels in placenta,

Nanjing BYabscience technology Co.,Ltd



liver and brain.,

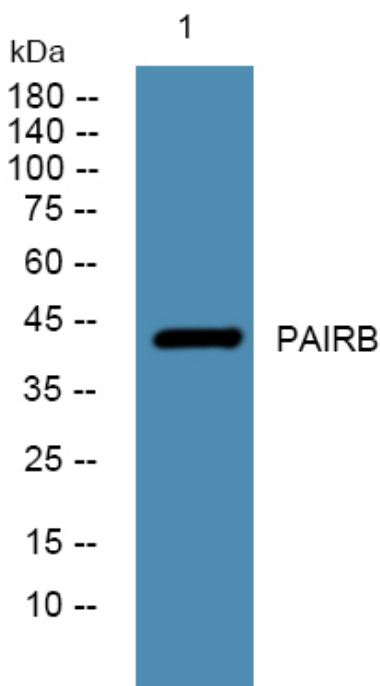
matters needing attention

Avoid repeated freezing and thawing!

Usage suggestions

This product can be used in immunological reaction related experiments. For more information, please consult technical personnel.

Products Images



Western blot analysis of lysates from K562 cells,
primary antibody was diluted at 1:1000, 4°over night