



# PI5L1 Polyclonal Antibody

<b>Catalog No</b>	BYab-05921
<b>Isotype</b>	IgG
<b>Reactivity</b>	Human;Mouse
<b>Applications</b>	WB;ELISA
<b>Gene Name</b>	PIP5KL1
<b>Protein Name</b>	Phosphatidylinositol 4-phosphate 5-kinase-like protein 1 (PI(4)P 5-kinase-like protein 1) (PtdIns(4)P-5-kinase-like protein 1) (EC 2.7.1.68)
<b>Immunogen</b>	Synthesized peptide derived from human protein . at AA range: 270-350
<b>Specificity</b>	PI5L1 Polyclonal Antibody detects endogenous levels of protein.
<b>Formulation</b>	Liquid in PBS containing 50% glycerol, and 0.02% sodium azide.
<b>Source</b>	Polyclonal, Rabbit,IgG
<b>Purification</b>	The antibody was affinity-purified from rabbit antiserum by affinity-chromatography using epitope-specific immunogen.
<b>Dilution</b>	WB 1:500-2000 ELISA 1:5000-20000
<b>Concentration</b>	1 mg/ml
<b>Purity</b>	≥90%
<b>Storage Stability</b>	-20°C/1 year
<b>Synonyms</b>	
<b>Observed Band</b>	43kD
<b>Cell Pathway</b>	Cytoplasm. Membrane. Localized to large cytoplasmic vesicular structures. .
<b>Tissue Specificity</b>	Brain,
<b>Function</b>	catalytic activity:ATP + 1-phosphatidyl-1D-myo-inositol 4-phosphate = ADP + 1-phosphatidyl-1D-myo-inositol 4,5-bisphosphate.,caution:It is unsure if the enzyme has intrinsic kinase activity.,function:May act as a scaffold to localize and regulate type I PI(4)P 5-kinases to specific compartments within the cell, where they generate PI(4,5)P2 for actin nucleation, signaling and scaffold protein recruitment and conversion to PI(3,4,5)P3.,similarity:Contains 1 PI5K domain.,subcellular location:Localized to large cytoplasmic vesicular structures.,subunit:Heterodimerizes with other type I phosphatidylinositol-4-phosphate 5-kinase.,
<b>Background</b>	PIP5KL1 is a phosphoinositide kinase-like protein that lacks intrinsic lipid kinase activity but associates with type I PIPKs (see PIP5K1A; MIM 603275) and may

**Nanjing BYabscience technology Co.,Ltd**



play a role in localization of PIPK activity (Chang et al., 2004 [PubMed 14701839]).[supplied by OMIM, Jun 2009],

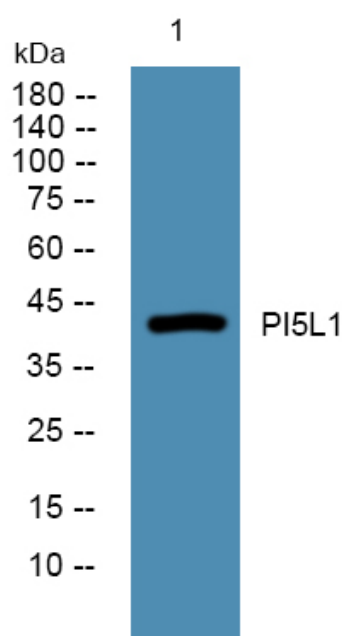
**matters needing attention**

Avoid repeated freezing and thawing!

**Usage suggestions**

This product can be used in immunological reaction related experiments. For more information, please consult technical personnel.

## Products Images



Western blot analysis of lysates from Jarkat cells, primary antibody was diluted at 1:1000, 4° over night.