



P2RX1 Polyclonal Antibody

Catalog No	BYab-05894
Isotype	IgG
Reactivity	Human;Mouse;Rat
Applications	WB;ELISA
Gene Name	P2RX1 P2X1
Protein Name	P2X purinoceptor 1 (P2X1) (ATP receptor) (Purinergic receptor)
Immunogen	Synthesized peptide derived from human protein . at AA range: 150-230
Specificity	P2RX1 Polyclonal Antibody detects endogenous levels of protein.
Formulation	Liquid in PBS containing 50% glycerol, and 0.02% sodium azide.
Source	Polyclonal, Rabbit,IgG
Purification	The antibody was affinity-purified from rabbit antiserum by affinity-chromatography using epitope-specific immunogen.
Dilution	WB 1:500-2000 ELISA 1:5000-20000
Concentration	1 mg/ml
Purity	≥90%
Storage Stability	-20°C/1 year
Synonyms	
Observed Band	43kD
Cell Pathway	Membrane; Multi-pass membrane protein.
Tissue Specificity	Blood,Lung,Placenta,Platelet,Urinary bladder,Urinary bladder smooth muscle,
Function	disease:Defects in P2RX1 are a cause of bleeding disorder [MIM:600845].,function:Ligand gated ion channel with relatively high calcium permeability. Binding to ATP mediates synaptic transmission between neurons and from neurons to smooth muscle. Seems to be linked to apoptosis, by increasing the intracellular concentration of calcium in the presence of ATP, leading to programmed cell death.,online information:P2RX1 entry,online information:P2X receptor entry,similarity:Belongs to the P2X receptor family.,subunit:Homo- or heteropolymers.,
Background	The protein encoded by this gene belongs to the P2X family of G-protein-coupled receptors. These proteins can form homo-and heterotimers and function as ATP-gated ion channels and mediate rapid and selective permeability to cations.

Nanjing BYabscience technology Co.,Ltd



This protein is primarily localized to smooth muscle where binds ATP and mediates synaptic transmission between neurons and from neurons to smooth muscle and may be responsible for sympathetic vasoconstriction in small arteries, arterioles and vas deferens. Mouse studies suggest that this receptor is essential for normal male reproductive function. This protein may also be involved in promoting apoptosis. [provided by RefSeq, Jun 2013],

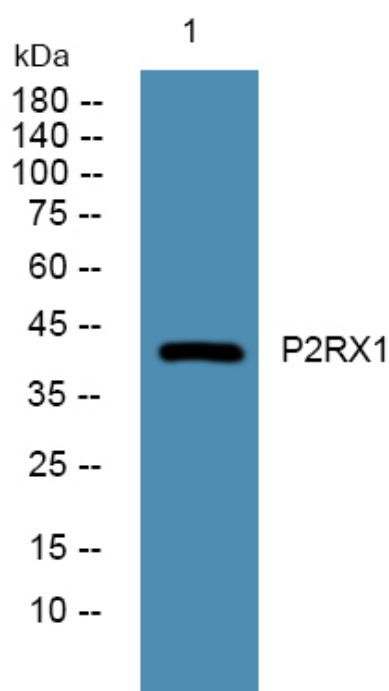
matters needing attention

Avoid repeated freezing and thawing!

Usage suggestions

This product can be used in immunological reaction related experiments. For more information, please consult technical personnel.

Products Images



Western blot analysis of lysates from SW480 cells, primary antibody was diluted at 1:1000, 4° over night