



# NBAS Polyclonal Antibody

Catalog No	BYab-05830
Isotype	IgG
Reactivity	Human;Rat;Mouse;
Applications	IHC;IF
Gene Name	NBAS NAG
Protein Name	Neuroblastoma-amplified sequence (Neuroblastoma-amplified gene protein)
Immunogen	Synthesized peptide derived from human protein . at AA range: 1880-1960
Specificity	NBAS Polyclonal Antibody detects endogenous levels of protein.
Formulation	Liquid in PBS containing 50% glycerol, and 0.02% sodium azide.
Source	Polyclonal, Rabbit,IgG
Purification	The antibody was affinity-purified from rabbit antiserum by affinity-chromatography using epitope-specific immunogen.
Dilution	IHC-p 1:50-300. IF 1:50-200
Concentration	1 mg/ml
Purity	≥90%
Storage Stability	-20°C/1 year
Synonyms	
Observed Band	260kD
Cell Pathway	Cytoplasm . Endoplasmic reticulum . Endoplasmic reticulum membrane; Peripheral membrane protein .
Tissue Specificity	Broadly expressed, with highest levels in heart and skeletal muscle, and lowest levels in liver, small intestine and thymus. Well expressed in retinal ganglion cells, epidermal skin cells, and leukocytes. Up-regulated together with N-myc in some neuroblastoma cell lines.
Function	sequence caution:Translated as stop.,sequence caution:Translation N-terminally extended.,similarity:Contains 2 WD repeats.,tissue specificity:Broadly expressed, with highest levels in heart and skeletal muscle, and lowest levels in liver, small intestine and thymus. Up-regulated together with N-myc in some neuroblastoma cell lines.,
Background	This gene encodes a protein with two leucine zipper domains, a ribosomal protein S14 signature domain and a Sec39 like domain. The protein is thought to be involved in Golgi-to-ER transport. Mutations in this gene are associated with short stature, optic nerve atrophy, and Pelger-Huet anomaly. [provided by

Nanjing BYabscience technology Co.,Ltd



RefSeq, Oct 2012],

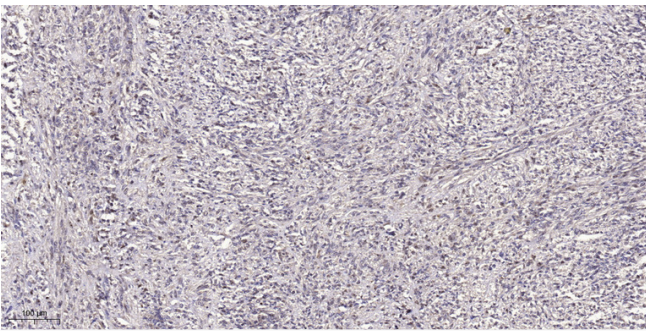
**matters needing attention**

Avoid repeated freezing and thawing!

**Usage suggestions**

This product can be used in immunological reaction related experiments. For more information, please consult technical personnel.

## Products Images



Immunohistochemical analysis of paraffin-embedded human small intestinal carcinoma tissue. 1,primary Antibody was diluted at 1:200(4° overnight). 2, Sodium citrate pH 6.0 was used for antigen retrieval(>98° C,20min). 3,Secondary antibody was diluted at 1:200

Nanjing BYabscience technology Co.,Ltd

网址: [www.njbybio.com](http://www.njbybio.com)

官方热线: 025-5229-8998

监督电话: 15950492658