



NDUAA Polyclonal Antibody

Catalog No	BYab-05790
Isotype	IgG
Reactivity	Human;Rat;Mouse;
Applications	WB;ELISA
Gene Name	NDUFA10
Protein Name	NADH dehydrogenase [ubiquinone] 1 alpha subcomplex subunit 10, mitochondrial (Complex I-42kD) (CI-42kD) (NADH-ubiquinone oxidoreductase 42 kDa subunit)
Immunogen	Synthesized peptide derived from human protein . at AA range: 50-130
Specificity	NDUAA Polyclonal Antibody detects endogenous levels of protein.
Formulation	Liquid in PBS containing 50% glycerol, and 0.02% sodium azide.
Source	Polyclonal, Rabbit,IgG
Purification	The antibody was affinity-purified from rabbit antiserum by affinity-chromatography using epitope-specific immunogen.
Dilution	WB 1:500-2000 ELISA 1:5000-20000
Concentration	1 mg/ml
Purity	≥90%
Storage Stability	-20°C/1 year
Synonyms	
Observed Band	39kD
Cell Pathway	Mitochondrion matrix .
Tissue Specificity	Brain,Placenta,Skin,
Function	cofactor: Binds 1 FAD per subunit.,function: Accessory subunit of the mitochondrial membrane respiratory chain NADH dehydrogenase (Complex I), that is believed to be not involved in catalysis. Complex I functions in the transfer of electrons from NADH to the respiratory chain. The immediate electron acceptor for the enzyme is believed to be ubiquinone.,similarity: Belongs to the complex I NDUFA10 subunit family.,subunit: Complex I is composed of 45 different subunits. This a component of the hydrophobic protein fraction.,
Background	The protein encoded by this gene is a component of 42 kDa complex I, the first enzyme complex in the electron transport chain of mitochondria. This protein has NADH dehydrogenase activity and oxidoreductase activity. It transfers electrons

Nanjing BYabscience technology Co.,Ltd



from NADH to the respiratory chain. A mutation in this gene was found in an individual with Leigh syndrome. [provided by RefSeq, Apr 2016],

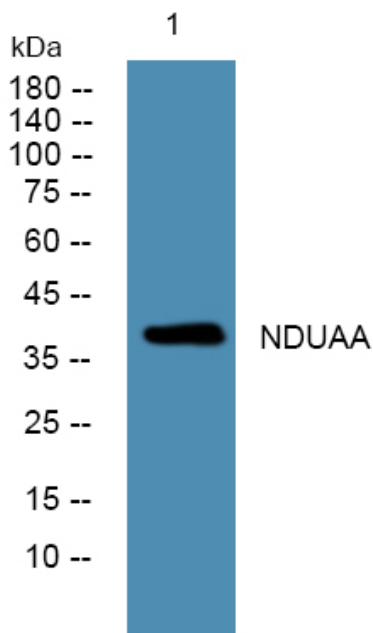
matters needing attention

Avoid repeated freezing and thawing!

Usage suggestions

This product can be used in immunological reaction related experiments. For more information, please consult technical personnel.

Products Images



Western blot analysis of lysates from HCT116 cells, primary antibody was diluted at 1:1000, 4°over night