



SAR1A Polyclonal Antibody

Catalog No	BYab-05622
Isotype	IgG
Reactivity	Human;Mouse
Applications	WB;ELISA
Gene Name	SAR1A SAR1 SARA SARA1
Protein Name	GTP-binding protein SAR1a (COPII-associated small GTPase)
Immunogen	Synthesized peptide derived from part region of human protein
Specificity	SAR1A Polyclonal Antibody detects endogenous levels of protein.
Formulation	Liquid in PBS containing 50% glycerol, and 0.02% sodium azide.
Source	Polyclonal, Rabbit,IgG
Purification	The antibody was affinity-purified from rabbit antiserum by affinity-chromatography using epitope-specific immunogen.
Dilution	WB 1:500-2000 ELISA 1:5000-20000
Concentration	1 mg/ml
Purity	≥90%
Storage Stability	-20°C/1 year
Synonyms	
Observed Band	21kD
Cell Pathway	Endoplasmic reticulum . Golgi apparatus .
Tissue Specificity	Bone marrow,Kidney,Lung,Skin,
Function	function:Involved in transport from the endoplasmic reticulum to the Golgi apparatus (By similarity). Required to maintain SEC16A localization at discrete locations on the ER membrane perhaps by preventing its dissociation. SAR1A-GTP-dependent assembly of SEC16A on the ER membrane forms an organized scaffold defining endoplasmic reticulum exit sites (ERES).,similarity:Belongs to the small GTPase superfamily.,similarity:Belongs to the small GTPase superfamily. SAR1 family.,
Background	function:Involved in transport from the endoplasmic reticulum to the Golgi apparatus (By similarity). Required to maintain SEC16A localization at discrete locations on the ER membrane perhaps by preventing its dissociation. SAR1A-GTP-dependent assembly of SEC16A on the ER membrane forms an

Nanjing BYabscience technology Co.,Ltd



organized scaffold defining endoplasmic reticulum exit sites (ERES).,similarity:Belongs to the small GTPase superfamily.,similarity:Belongs to the small GTPase superfamily. SAR1 family.,

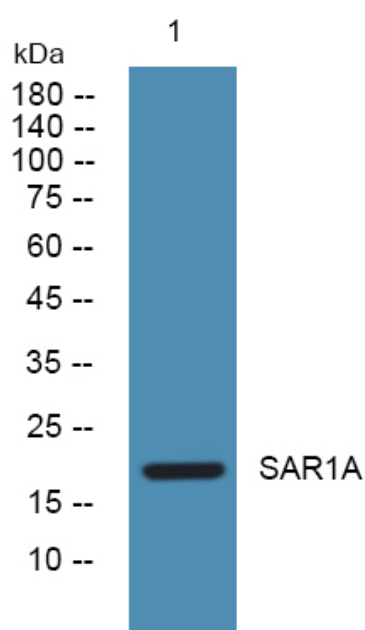
matters needing attention

Avoid repeated freezing and thawing!

Usage suggestions

This product can be used in immunological reaction related experiments. For more information, please consult technical personnel.

Products Images



Western blot analysis of lysates from K562 cells, primary antibody was diluted at 1:1000, 4° over night