



GPSM3 Polyclonal Antibody

Catalog No	BYab-05609
Isotype	IgG
Reactivity	Human;Mouse;Rat
Applications	WB;ELISA
Gene Name	GPSM3 AGS4 C6orf9 G18
Protein Name	G-protein-signaling modulator 3 (Activator of G-protein signaling 4) (G18.1b) (Protein G18)
Immunogen	Synthesized peptide derived from part region of human protein
Specificity	GPSM3 Polyclonal Antibody detects endogenous levels of protein.
Formulation	Liquid in PBS containing 50% glycerol, and 0.02% sodium azide.
Source	Polyclonal, Rabbit,IgG
Purification	The antibody was affinity-purified from rabbit antiserum by affinity-chromatography using epitope-specific immunogen.
Dilution	WB 1:500-2000 ELISA 1:5000-20000
Concentration	1 mg/ml
Purity	≥90%
Storage Stability	-20°C/1 year
Synonyms	
Observed Band	17kD
Cell Pathway	Cytoplasm .
Tissue Specificity	Expressed in heart, placenta, lung and liver.
Function	domain:The GoLoco 1 and/or GoLoco 3 domains exhibit GDI activity towards GDP-bound G(i) alpha protein, but not the GoLoco 2 domain.,function:Interacts with subunit of G(i) alpha proteins and regulates the activation of G(i) alpha proteins.,similarity:Contains 3 GoLoco domains.,tissue specificity:Expressed in heart, placenta, lung and liver.,
Background	domain:The GoLoco 1 and/or GoLoco 3 domains exhibit GDI activity towards GDP-bound G(i) alpha protein, but not the GoLoco 2 domain.,function:Interacts with subunit of G(i) alpha proteins and regulates the activation of G(i) alpha proteins.,similarity:Contains 3 GoLoco domains.,tissue specificity:Expressed in heart, placenta, lung and liver.,

Nanjing BYabscience technology Co.,Ltd



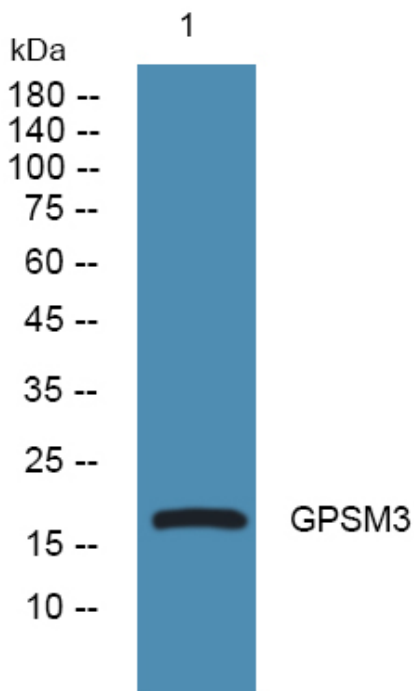
matters needing attention

Avoid repeated freezing and thawing!

Usage suggestions

This product can be used in immunological reaction related experiments. For more information, please consult technical personnel.

Products Images



Western blot analysis of lysates from PC12 cells, primary antibody was diluted at 1:1000, 4° over night