



HECD1 Polyclonal Antibody

Catalog No	BYab-05551
Isotype	IgG
Reactivity	Human;Mouse
Applications	IHC;IF
Gene Name	HECTD1 KIAA1131
Protein Name	E3 ubiquitin-protein ligase HECTD1 (EC 6.3.2.-) (E3 ligase for inhibin receptor) (EULIR) (HECT domain-containing protein 1)
Immunogen	Synthesized peptide derived from part region of human protein
Specificity	HECD1 Polyclonal Antibody detects endogenous levels of protein.
Formulation	Liquid in PBS containing 50% glycerol, and 0.02% sodium azide.
Source	Polyclonal, Rabbit,IgG
Purification	The antibody was affinity-purified from rabbit antiserum by affinity-chromatography using epitope-specific immunogen.
Dilution	IHC-p 1:50-300. IF 1:50-200
Concentration	1 mg/ml
Purity	≥90%
Storage Stability	-20°C/1 year
Synonyms	
Observed Band	287kD
Cell Pathway	nucleus,cytoplasm,
Tissue Specificity	Bone,Brain,Muscle,Ovary,Testis,Urinary bladder,
Function	function:Probable E3 ubiquitin-protein ligase which accepts ubiquitin from an E2 ubiquitin-conjugating enzyme in the form of a thioester and then directly transfers the ubiquitin to targeted substrates.,pathway:Protein modification; protein ubiquitination.,similarity:Belongs to the UPL family. K-HECT subfamily.,similarity:Contains 1 HECT (E6AP-type E3 ubiquitin-protein ligase) domain.,similarity:Contains 1 MIB/HERC2 domain.,similarity:Contains 4 ANK repeats.,
Background	function:Probable E3 ubiquitin-protein ligase which accepts ubiquitin from an E2 ubiquitin-conjugating enzyme in the form of a thioester and then directly transfers the ubiquitin to targeted substrates.,pathway:Protein modification; protein ubiquitination.,similarity:Belongs to the UPL family. K-HECT

Nanjing BYabscience technology Co.,Ltd



subfamily.,similarity:Contains 1 HECT (E6AP-type E3 ubiquitin-protein ligase) domain.,similarity:Contains 1 MIB/HERC2 domain.,similarity:Contains 4 ANK repeats.,

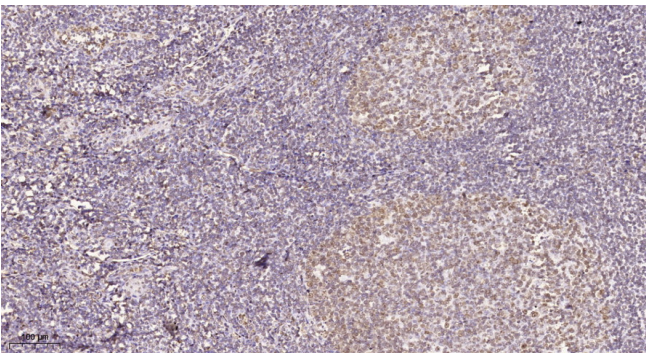
matters needing attention

Avoid repeated freezing and thawing!

Usage suggestions

This product can be used in immunological reaction related experiments. For more information, please consult technical personnel.

Products Images



Immunohistochemical analysis of paraffin-embedded human tonsil. 1, Tris-EDTA,pH9.0 was used for antigen retrieval. 2 Antibody was diluted at 1:200(4° overnight.3,Secondary antibody was diluted at 1:200(room temperature, 45min).