



# RPA43 Polyclonal Antibody

Catalog No	BYab-05531
Isotype	IgG
Reactivity	Human;Rat;Mouse;
Applications	WB;ELISA
Gene Name	TWISTNB
Protein Name	DNA-directed RNA polymerase I subunit RPA43 (Twist neighbor protein)
Immunogen	Synthesized peptide derived from part region of human protein
Specificity	RPA43 Polyclonal Antibody detects endogenous levels of protein.
Formulation	Liquid in PBS containing 50% glycerol, and 0.02% sodium azide.
Source	Polyclonal, Rabbit,IgG
Purification	The antibody was affinity-purified from rabbit antiserum by affinity-chromatography using epitope-specific immunogen.
Dilution	WB 1:500-2000 ELISA 1:5000-20000
Concentration	1 mg/ml
Purity	≥90%
Storage Stability	-20°C/1 year
Synonyms	
Observed Band	37kD
Cell Pathway	Nucleus, nucleolus .
Tissue Specificity	Widely expressed. Expressed in all fetal and adult tissues tested, with highest expression in fetal lung, liver, and kidney, and low expression in all adult tissues.
Function	function:DNA-dependent RNA polymerase catalyzes the transcription of DNA into RNA using the four ribonucleoside triphosphates as substrates. Component of RNA polymerase I which synthesizes ribosomal RNA precursors. Through its association with RRN3/TIF-1A may be involved in recruitment of Pol I to rDNA promoters.,similarity:Belongs to the eukaryotic RPA43 RNA polymerase subunit family.,subunit:Component of the RNA polymerase I (Pol I) complex consisting of at least 13 subunits (By similarity). Interacts with RRN3/TIF-1A.,tissue specificity:Widely expressed. Expressed in all fetal and adult tissues tested, with highest expression in fetal lung, liver, and kidney, and low expression in all adult tissues.,

Nanjing BYabscience technology Co.,Ltd



## Background

function:DNA-dependent RNA polymerase catalyzes the transcription of DNA into RNA using the four ribonucleoside triphosphates as substrates. Component of RNA polymerase I which synthesizes ribosomal RNA precursors. Through its association with RRN3/TIF-IA may be involved in recruitment of Pol I to rDNA promoters.,similarity:Belongs to the eukaryotic RPA43 RNA polymerase subunit family.,subunit:Component of the RNA polymerase I (Pol I) complex consisting of at least 13 subunits (By similarity). Interacts with RRN3/TIF-IA.,tissue specificity:Widely expressed. Expressed in all fetal and adult tissues tested, with highest expression in fetal lung, liver, and kidney, and low expression in all adult tissues.,

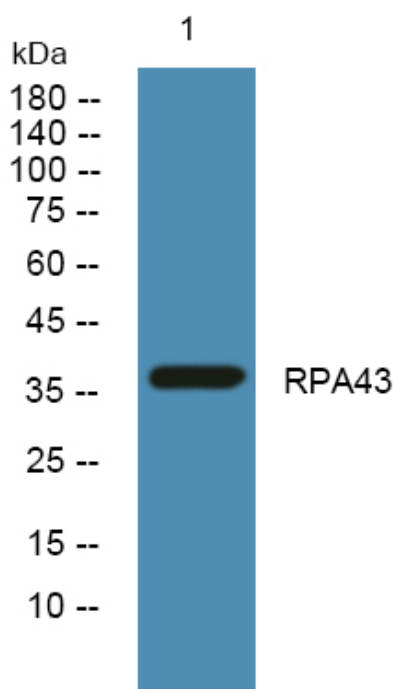
## matters needing attention

Avoid repeated freezing and thawing!

## Usage suggestions

This product can be used in immunological reaction related experiments. For more information, please consult technical personnel.

## Products Images



Western blot analysis of lysates from U2OS cells, primary antibody was diluted at 1:1000, 4° over night