



CLD12 Polyclonal Antibody

Catalog No	BYab-05474
Isotype	IgG
Reactivity	Human;Mouse
Applications	WB;ELISA
Gene Name	CLDN12
Protein Name	Claudin-12
Immunogen	Synthesized peptide derived from part region of human protein
Specificity	CLD12 Polyclonal Antibody detects endogenous levels of protein.
Formulation	Liquid in PBS containing 50% glycerol, and 0.02% sodium azide.
Source	Polyclonal, Rabbit,IgG
Purification	The antibody was affinity-purified from rabbit antiserum by affinity-chromatography using epitope-specific immunogen.
Dilution	WB 1:500-2000 ELISA 1:5000-20000
Concentration	1 mg/ml
Purity	≥90%
Storage Stability	-20°C/1 year
Synonyms	
Observed Band	26kD
Cell Pathway	Cell junction, tight junction. Cell membrane ; Multi-pass membrane protein .
Tissue Specificity	Brain,Testis,
Function	function:Plays a major role in tight junction-specific obliteration of the intercellular space, through calcium-independent cell-adhesion activity.,similarity:Belongs to the claudin family.,
Background	This gene encodes a member of the claudin family. Claudins are integral membrane proteins and components of tight junction strands. Tight junction strands serve as a physical barrier to prevent solutes and water from passing freely through the paracellular space between epithelial or endothelial cell sheets, and also play critical roles in maintaining cell polarity and signal transductions. This gene is expressed in the inner ear and bladder epithelium, and it is over-expressed in colorectal carcinomas. This protein and claudin 2 are critical for vitamin D-dependent Ca ²⁺ absorption between enterocytes. Multiple alternatively

Nanjing BYabscience technology Co.,Ltd



spliced transcript variants encoding the same protein have been found.[provided by RefSeq, Sep 2011],

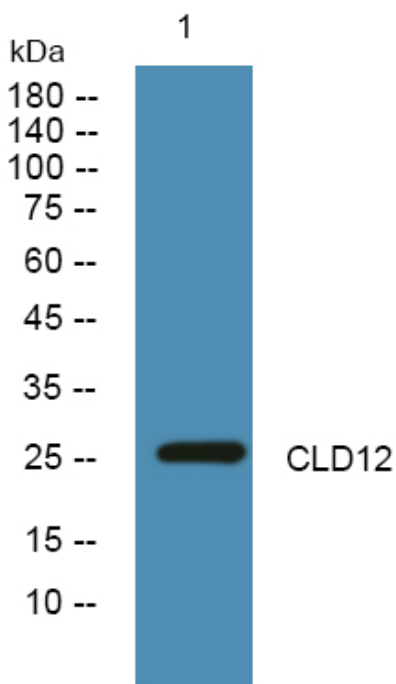
matters needing attention

Avoid repeated freezing and thawing!

Usage suggestions

This product can be used in immunological reaction related experiments. For more information, please consult technical personnel.

Products Images



Western blot analysis of lysates from U2OS cells, primary antibody was diluted at 1:1000, 4° over night