



KBRS1 Polyclonal Antibody

Catalog No	BYab-05190
Isotype	IgG
Reactivity	Human;Mouse
Applications	WB;ELISA
Gene Name	NKIRAS1 KBRAS1
Protein Name	NF-kappa-B inhibitor-interacting Ras-like protein 1 (I-kappa-B-interacting Ras-like protein 1) (Kappa B-Ras protein 1) (KappaB-Ras1)
Immunogen	Synthesized peptide derived from human protein . at AA range: 50-130
Specificity	KBRS1 Polyclonal Antibody detects endogenous levels of protein.
Formulation	Liquid in PBS containing 50% glycerol, and 0.02% sodium azide.
Source	Polyclonal, Rabbit,IgG
Purification	The antibody was affinity-purified from rabbit antiserum by affinity-chromatography using epitope-specific immunogen.
Dilution	WB 1:500-2000 ELISA 1:5000-20000
Concentration	1 mg/ml
Purity	≥90%
Storage Stability	-20°C/1 year
Synonyms	
Observed Band	21kD
Cell Pathway	Cytoplasm .
Tissue Specificity	Widely expressed.
Function	domain:In contrast to other members of the Ras family, the members of the KappaB-Ras subfamily do not contain the conserved Gly and Gln residues in positions 13 and 65, which are replaced by Leu residues, and are therefore similar to the constitutively active forms of oncogenic forms of Ras. This suggests that members of this family are clearly different from other small GTPases proteins.,function:Atypical Ras-like protein that acts as a potent regulator of NF-kappa-B activity by preventing the degradation of NF-kappa-B inhibitor beta (NFKBIB) by most signals, explaining why NFKBIB is more resistant to degradation. May act by blocking phosphorylation of NFKBIB and mediating cytoplasmic retention of p65/RELA NF-kappa-B subunit. It is unclear whether it acts as a GTPase. Both GTP- and GDP-bound forms block phosphorylation of NFKBIB.,similarity:Belongs to the small GTPase superfamily. Ras f

Nanjing BYabscience technology Co.,Ltd



Background

domain: In contrast to other members of the Ras family, the members of the KappaB-Ras subfamily do not contain the conserved Gly and Gln residues in positions 13 and 65, which are replaced by Leu residues, and are therefore similar to the constitutively active forms of oncogenic forms of Ras. This suggests that members of this family are clearly different from other small GTPases proteins. function: Atypical Ras-like protein that acts as a potent regulator of NF-kappa-B activity by preventing the degradation of NF-kappa-B inhibitor beta (NFKBIB) by most signals, explaining why NFKBIB is more resistant to degradation. May act by blocking phosphorylation of NFKBIB and mediating cytoplasmic retention of p65/RELA NF-kappa-B subunit. It is unclear whether it acts as a GTPase. Both GTP- and GDP-bound forms block phosphorylation of NFKBIB. similarity: Belongs to the small GTPase superfamily. Ras family. KappaB-Ras subfamily. subunit: Interacts with both NF-kappa-B inhibitor alpha (NFKBIA) and beta (NFKBIB) in vitro. However, it probably only interacts with NFKBIB in vivo. Forms a complex with NFKBIB and NF-kappa-B heterodimer (p50/NFKB1 and p65/RELA). Also interacts with c-Rel (REL). tissue specificity: Widely expressed.

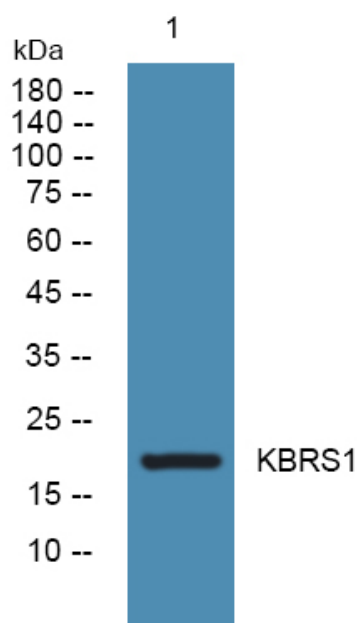
matters needing attention

Avoid repeated freezing and thawing!

Usage suggestions

This product can be used in immunological reaction related experiments. For more information, please consult technical personnel.

Products Images



Western blot analysis of lysates from HCT116 cells, primary antibody was diluted at 1:1000, 4° over night

Nanjing BYabscience technology Co.,Ltd

网址: www.njbybio.com

官方热线: 025-5229-8998

监督电话: 15950492658