



PDCD2 Polyclonal Antibody

Catalog No	BYab-05147
Isotype	IgG
Reactivity	Human;Mouse;Rat
Applications	WB;ELISA
Gene Name	PDCD2 RP8 ZMYND7
Protein Name	Programmed cell death protein 2 (Zinc finger MYND domain-containing protein 7) (Zinc finger protein Rp-8)
Immunogen	Synthesized peptide derived from human protein . at AA range: 180-260
Specificity	PDCD2 Polyclonal Antibody detects endogenous levels of protein.
Formulation	Liquid in PBS containing 50% glycerol, and 0.02% sodium azide.
Source	Polyclonal, Rabbit,IgG
Purification	The antibody was affinity-purified from rabbit antiserum by affinity-chromatography using epitope-specific immunogen.
Dilution	WB 1:500-2000 ELISA 1:5000-20000
Concentration	1 mg/ml
Purity	≥90%
Storage Stability	-20°C/1 year
Synonyms	
Observed Band	37kD
Cell Pathway	Nucleus .
Tissue Specificity	Ubiquitous.
Function	function:May be a DNA-binding protein with a regulatory function. May play an important role in cell death and/or in regulation of cell proliferation.,similarity:Contains 1 MYND-type zinc finger.,tissue specificity:Ubiquitous.,
Background	This gene encodes a nuclear protein expressed in a variety of tissues. Expression of this gene has been shown to be repressed by B-cell CLL/lymphoma 6 (BCL6), a transcriptional repressor required for lymph node germinal center development, suggesting that BCL6 regulates apoptosis by its effects on this protein. Alternative splicing results in multiple transcript variants and pseudogenes have been identified on chromosomes 9 and 12. [provided by RefSeq, Dec 2010],

Nanjing BYabscience technology Co.,Ltd



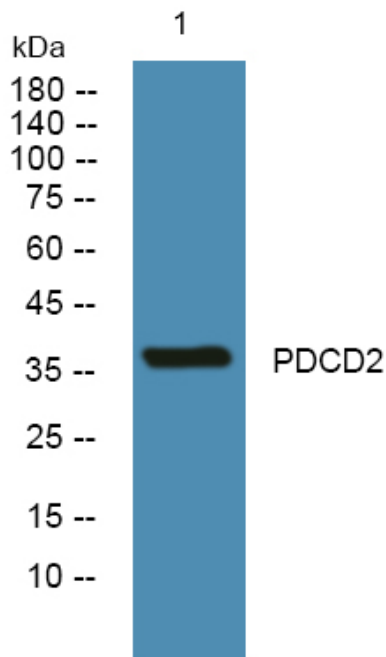
matters needing attention

Avoid repeated freezing and thawing!

Usage suggestions

This product can be used in immunological reaction related experiments. For more information, please consult technical personnel.

Products Images



Western blot analysis of lysates from DU145 cells, primary antibody was diluted at 1:1000, 4° over night