



IFNK Polyclonal Antibody

Catalog No	BYab-05098
Isotype	IgG
Reactivity	Human;Rat;Mouse;
Applications	WB;ELISA
Gene Name	IFNK UNQ6124/PRO20084
Protein Name	Interferon kappa (IFN-kappa)
Immunogen	Synthesized peptide derived from human protein . at AA range: 70-150
Specificity	IFNK Polyclonal Antibody detects endogenous levels of protein.
Formulation	Liquid in PBS containing 50% glycerol, and 0.02% sodium azide.
Source	Polyclonal, Rabbit,IgG
Purification	The antibody was affinity-purified from rabbit antiserum by affinity-chromatography using epitope-specific immunogen.
Dilution	WB 1:500-2000 ELISA 1:5000-20000
Concentration	1 mg/ml
Purity	≥90%
Storage Stability	-20°C/1 year
Synonyms	
Observed Band	22kD
Cell Pathway	Secreted.
Tissue Specificity	Expressed in keratinocytes, monocytes and in resting dendritic cells.
Function	function:May play a role in the regulation of immune cell function. Cytokine that imparts cellular protection against viral infection in a species-specific manner. Activates the interferon-stimulated response element signaling pathway. It is able to directly modulate cytokine release from monocytes and dendritic cells. Binds heparin.,induction:By viral infection, upon exposure to double-stranded RNA, or upon treatment with either interferon-gamma or interferon-beta.,similarity:Belongs to the alpha/beta interferon family.,tissue specificity:Expressed in keratinocytes, monocytes and in resting dendritic cells.,
Background	This gene encodes a member of the type I interferon family. Type I interferons are a group of related glycoproteins that play an important role in host defenses against viral infections. This protein is expressed in keratinocytes and the gene is

Nanjing BYabscience technology Co.,Ltd



found on chromosome 9, adjacent to the type I interferon cluster. [provided by RefSeq, Jul 2008],

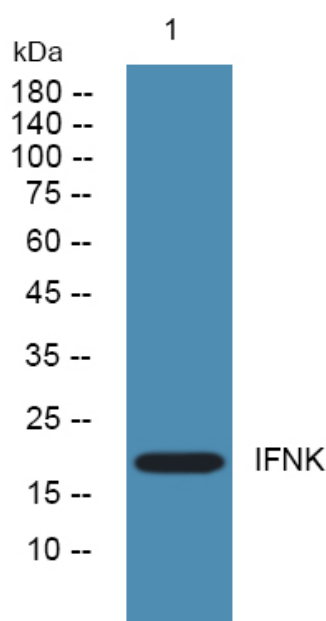
matters needing attention

Avoid repeated freezing and thawing!

Usage suggestions

This product can be used in immunological reaction related experiments. For more information, please consult technical personnel.

Products Images



Western blot analysis of lysates from PC12 cells, primary antibody was diluted at 1:1000, 4° over night