



FRAT1 Polyclonal Antibody

Catalog No	BYab-05076
Isotype	IgG
Reactivity	Human;Mouse
Applications	WB;ELISA
Gene Name	FRAT1
Protein Name	Proto-oncogene FRAT1 (Frequently rearranged in advanced T-cell lymphomas 1) (FRAT-1)
Immunogen	Synthesized peptide derived from human protein . at AA range: 130-210
Specificity	FRAT1 Polyclonal Antibody detects endogenous levels of protein.
Formulation	Liquid in PBS containing 50% glycerol, and 0.02% sodium azide.
Source	Polyclonal, Rabbit,IgG
Purification	The antibody was affinity-purified from rabbit antiserum by affinity-chromatography using epitope-specific immunogen.
Dilution	WB 1:500-2000 ELISA 1:5000-20000
Concentration	1 mg/ml
Purity	≥90%
Storage Stability	-20°C/1 year
Synonyms	
Observed Band	30kD
Cell Pathway	Cytoplasm.
Tissue Specificity	Lung,Testis,
Function	function:Positively regulates the Wnt signaling pathway by stabilizing beta-catenin through the association with GSK-3. May play a role in tumor progression and collaborate with PIM1 and MYC in lymphomagenesis.,PTM:Phosphorylated.,similarity:Belongs to the GSK-3-binding protein family.,subunit:Binds DVL1. Binds GSK-3 and prevent GSK-3-dependent phosphorylation.,
Background	The protein encoded by this gene belongs to the GSK-3-binding protein family. The protein inhibits GSK-3-mediated phosphorylation of beta-catenin and positively regulates the Wnt signaling pathway. It may function in tumor progression and in lymphomagenesis. [provided by RefSeq, Oct 2008],

Nanjing BYabscience technology Co.,Ltd



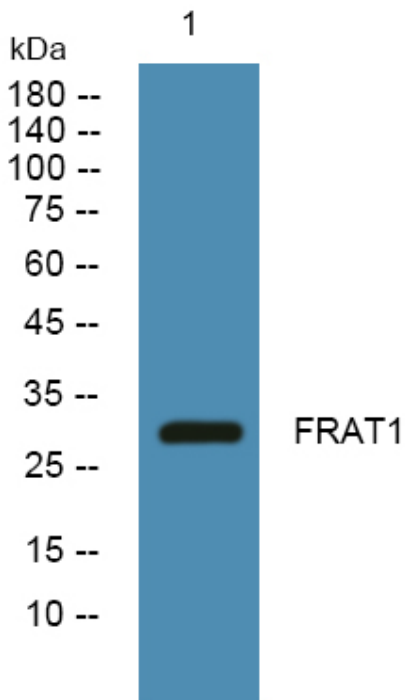
matters needing attention

Avoid repeated freezing and thawing!

Usage suggestions

This product can be used in immunological reaction related experiments. For more information, please consult technical personnel.

Products Images



Western blot analysis of lysates from A431 cells, primary antibody was diluted at 1:1000, 4° over night