



# F215A Polyclonal Antibody

Catalog No	BYab-05049
Isotype	IgG
Reactivity	Human;Rat;Mouse;
Applications	WB;ELISA
Gene Name	FAM215A APR2 C17orf88
Protein Name	Putative protein FAM215A (Putative apoptosis-related protein 2) (APR-2)
Immunogen	Synthesized peptide derived from human protein . at AA range: 30-110
Specificity	F215A Polyclonal Antibody detects endogenous levels of protein.
Formulation	Liquid in PBS containing 50% glycerol, and 0.02% sodium azide.
Source	Polyclonal, Rabbit,IgG
Purification	The antibody was affinity-purified from rabbit antiserum by affinity-chromatography using epitope-specific immunogen.
Dilution	WB 1:500-2000 ELISA 1:5000-20000
Concentration	1 mg/ml
Purity	≥90%
Storage Stability	-20°C/1 year
Synonyms	
Observed Band	12kD
Cell Pathway	
Tissue Specificity	
Function	apoptosis, cell death, programmed cell death, death,
Background	FAM215A (Family With Sequence Similarity 215 Member A (Non-Protein Coding)) is an RNA Gene, and is affiliated with the non-coding RNA class. It is a Mouse Monoclonal antibody to 6D11 to C17orf88, APR-2, FAM215A, family with sequence similarity 215, member A (non-protein coding), LINC00530. This antibody recognizes Human antigen.
matters needing attention	Avoid repeated freezing and thawing!

Nanjing BYabscience technology Co.,Ltd

网址: [www.njbybio.com](http://www.njbybio.com)

官方热线: 025-5229-8998

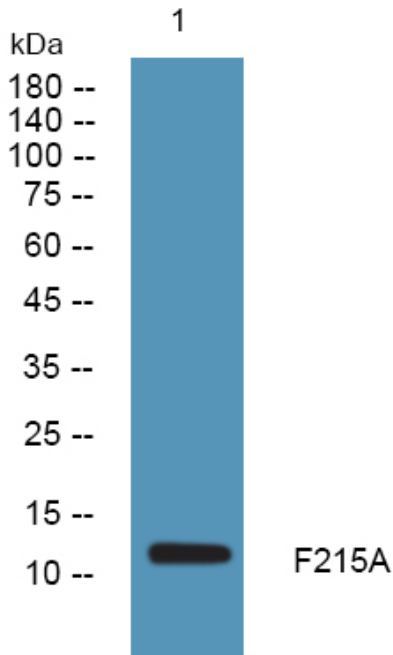
监督电话: 15950492658



### Usage suggestions

This product can be used in immunological reaction related experiments. For more information, please consult technical personnel.

### Products Images



Western blot analysis of lysates from HCT116 cells, primary antibody was diluted at 1:1000, 4° over night