



CD320 Polyclonal Antibody

Catalog No	BYab-05046
Isotype	IgG
Reactivity	Human;Mouse;Rat
Applications	WB;ELISA
Gene Name	CD320 8D6A UNQ198/PRO224
Protein Name	CD320 antigen (8D6 antigen) (FDC-signaling molecule 8D6) (FDC-SM-8D6) (Transcobalamin receptor) (TCbIR) (CD antigen CD320)
Immunogen	Synthesized peptide derived from human protein . at AA range: 100-180
Specificity	CD320 Polyclonal Antibody detects endogenous levels of protein.
Formulation	Liquid in PBS containing 50% glycerol, and 0.02% sodium azide.
Source	Polyclonal, Rabbit,IgG
Purification	The antibody was affinity-purified from rabbit antiserum by affinity-chromatography using epitope-specific immunogen.
Dilution	WB 1:500-2000 ELISA 1:5000-20000
Concentration	1 mg/ml
Purity	≥90%
Storage Stability	-20°C/1 year
Synonyms	
Observed Band	31kD
Cell Pathway	Cell membrane ; Single-pass type I membrane protein .
Tissue Specificity	Detected in the germinal center (GC) of lymphoid follicles (at protein level) (PubMed:11418631). Expressed abundantly on follicular dendritic cells (FDCs) (PubMed:10727470).
Function	function:Germinal center-B (GC-B) cells differentiate into memory B-cells and plasma cells (PC) through interaction with T-cells and follicular dendritic cells (FDC). CD320 augments the proliferation of PC precursors generated by IL-10. Receptor for the cellular uptake of transcobalamin bound cobalamin.,similarity:Contains 2 LDL-receptor class A domains.,tissue specificity:Expressed abundantly on follicular dendritic cells (FDCs).,
Background	This gene encodes the transcobalamin receptor that is expressed at the cell surface. It mediates the cellular uptake of transcobalamin bound cobalamin (vitamin B12), and is involved in B-cell proliferation and immunoglobulin secretion. Mutations in this gene are associated with methylmalonic aciduria. Alternatively

Nanjing BYabs science technology Co.,Ltd



spliced transcript variants encoding different isoforms have been found for this gene.[provided by RefSeq, Jan 2011],

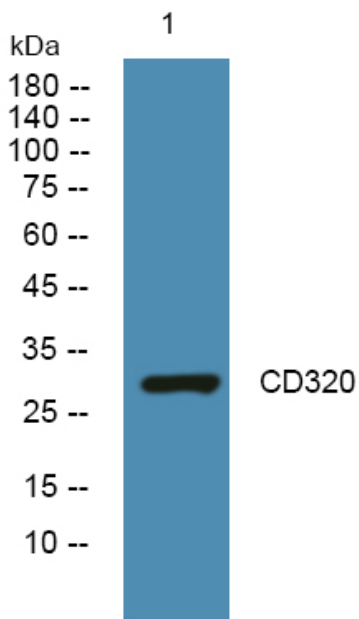
matters needing attention

Avoid repeated freezing and thawing!

Usage suggestions

This product can be used in immunological reaction related experiments. For more information, please consult technical personnel.

Products Images



Western blot analysis of lysates from SW480 cells, primary antibody was diluted at 1:1000, 4° over night