



RGS19 Polyclonal Antibody

Catalog No	BYab-04912
Isotype	IgG
Reactivity	Human;Mouse;Rat
Applications	WB;ELISA
Gene Name	RGS19 GAIP GNAI3IP
Protein Name	Regulator of G-protein signaling 19 (RGS19) (G-alpha-interacting protein) (GAIP)
Immunogen	Synthesized peptide derived from human protein . at AA range: 90-170
Specificity	RGS19 Polyclonal Antibody detects endogenous levels of protein.
Formulation	Liquid in PBS containing 50% glycerol, and 0.02% sodium azide.
Source	Polyclonal, Rabbit,IgG
Purification	The antibody was affinity-purified from rabbit antiserum by affinity-chromatography using epitope-specific immunogen.
Dilution	WB 1:500-2000 ELISA 1:5000-20000
Concentration	1 mg/ml
Purity	≥90%
Storage Stability	-20°C/1 year
Synonyms	
Observed Band	23kD
Cell Pathway	Membrane; Lipid-anchor.
Tissue Specificity	Highest expression in lung. Placenta, liver and heart also express high levels of GAIP.
Function	function:Inhibits signal transduction by increasing the GTPase activity of G protein alpha subunits thereby driving them into their inactive GDP-bound form. Binds to G-alpha subfamily 1 members, with the order G(i)a3 > G(i)a1 > G(o)a >> G(z)a/G(i)a2. Activity on G(z)-alpha is inhibited by phosphorylation and palmitoylation of the G-protein.,PTM:Fatty acylated. Heavily palmitoylated in the cysteine string motif.,PTM:Phosphorylated, mainly on serine residues.,similarity:Contains 1 RGS domain.,subunit:Interacts with GIPC PDZ domain.,tissue specificity:Highest expression in lung. Placenta, liver and heart also express high levels of GAIP.,
Background	G proteins mediate a number of cellular processes. The protein encoded by this gene belongs to the RGS (regulators of G-protein signaling) family and specifically

Nanjing BYabscience technology Co.,Ltd



interacts with G protein, GAI3. This protein is a guanosine triphosphatase-activating protein that functions to down-regulate Galpha i/Galpha q-linked signaling. Alternatively spliced transcript variants encoding the same protein isoform have been found for this gene. [provided by RefSeq, Jul 2008],

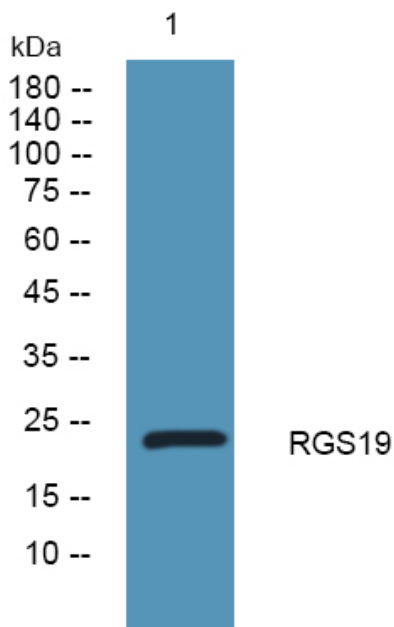
matters needing attention

Avoid repeated freezing and thawing!

Usage suggestions

This product can be used in immunological reaction related experiments. For more information, please consult technical personnel.

Products Images



Western blot analysis of lysates from K562 cells, primary antibody was diluted at 1:1000, 4° over night