



DNA Pol μ Polyclonal Antibody

Catalog No	BYab-02227
Isotype	IgG
Reactivity	Human;Rat;Mouse;
Applications	WB;ELISA
Gene Name	POLM
Protein Name	DNA-directed DNA/RNA polymerase mu
Immunogen	Synthesized peptide derived from DNA Pol μ . at AA range: 210-290
Specificity	DNA Pol μ Polyclonal Antibody detects endogenous levels of DNA Pol μ protein.
Formulation	Liquid in PBS containing 50% glycerol, 0.5% BSA and 0.02% sodium azide.
Source	Polyclonal, Rabbit,IgG
Purification	The antibody was affinity-purified from rabbit antiserum by affinity-chromatography using epitope-specific immunogen.
Dilution	Western Blot: 1/500 - 1/2000. ELISA: 1/40000. Not yet tested in other applications.
Concentration	1 mg/ml
Purity	$\geq 90\%$
Storage Stability	-20°C/1 year
Synonyms	POLM; polmu; DNA-directed DNA/RNA polymerase mu; Pol Mu; Terminal transferase
Observed Band	54kD
Cell Pathway	Nucleus .
Tissue Specificity	Expressed in a number of tissues. Abundant in thymus.
Function	catalytic activity:Deoxynucleoside triphosphate + DNA(n) = diphosphate + DNA(n+1).,cofactor:Magnesium.,function:Seems to act as an Ig mutase which is responsible for immunoglobulin (Ig) gene hypermutation.,similarity:Belongs to the DNA polymerase type-X family.,similarity:Contains 1 BRCT domain.,tissue specificity:Expressed in a number of tissues. Abundant in thymus.,
Background	catalytic activity:Deoxynucleoside triphosphate + DNA(n) = diphosphate + DNA(n+1).,cofactor:Magnesium.,function:Seems to act as an Ig mutase which is responsible for immunoglobulin (Ig) gene hypermutation.,similarity:Belongs to the DNA polymerase type-X family.,similarity:Contains 1 BRCT domain.,tissue specificity:Expressed in a number of tissues. Abundant in thymus.,

Nanjing BYabscience technology Co.,Ltd



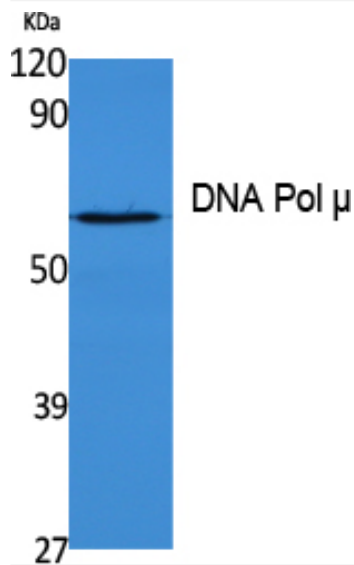
matters needing attention

Avoid repeated freezing and thawing!

Usage suggestions

This product can be used in immunological reaction related experiments. For more information, please consult technical personnel.

Products Images



Western Blot analysis of extracts from K562 cells, using DNA Pol μ Polyclonal Antibody. Secondary antibody(catalog#:RS0002) was diluted at 1:20000 cells nucleus extracted by Minute TM Cytoplasmic and Nuclear Fractionation kit (SC-003, Invent biotech, MN, USA).