



SNM1B Polyclonal Antibody

Catalog No	BYab-02219
Isotype	IgG
Reactivity	Human;Rat;Mouse;
Applications	WB;ELISA;IHC
Gene Name	DCLRE1B
Protein Name	5' exonuclease Apollo
Immunogen	Synthesized peptide derived from the C-terminal region of human SNM1B.
Specificity	SNM1B Polyclonal Antibody detects endogenous levels of SNM1B protein.
Formulation	Liquid in PBS containing 50% glycerol, 0.5% BSA and 0.02% sodium azide.
Source	Polyclonal, Rabbit,IgG
Purification	The antibody was affinity-purified from rabbit antiserum by affinity-chromatography using epitope-specific immunogen.
Dilution	WB 1:500-2000;IHC-p 1:50-300; ELISA 2000-20000
Concentration	1 mg/ml
Purity	≥90%
Storage Stability	-20°C/1 year
Synonyms	DCLRE1B; SNM1B; 5' exonuclease Apollo; DNA cross-link repair 1B protein; SNM1 homolog B; SNMIB; hSNM1B
Observed Band	60kD
Cell Pathway	Chromosome, telomere. Nucleus. Cytoplasm, cytoskeleton, microtubule organizing center, centrosome. Mainly localizes to telomeres, recruited via its interaction with TERF2. During mitosis, localizes to the centrosome.
Tissue Specificity	Placenta,Retinoblastoma,Teratocarcinoma,
Function	function:May be required for DNA interstrand cross-link repair.,PTM:Phosphorylated upon DNA damage, probably by ATM or ATR.,similarity:Belongs to the DNA repair metallo-beta-lactamase (DRMBL) family.,subcellular location:Localizes to discrete foci.,
Background	DNA interstrand cross-links prevent strand separation, thereby physically blocking transcription, replication, and segregation of DNA. DCLRE1B is one of several evolutionarily conserved genes involved in repair of interstrand cross-links (Dronkert et al., 2000 [PubMed 10848582]).[supplied by OMIM, Mar 2008],

Nanjing BYabscience technology Co.,Ltd



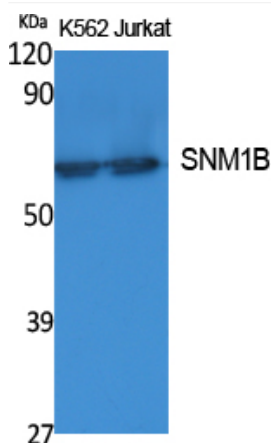
matters needing attention

Avoid repeated freezing and thawing!

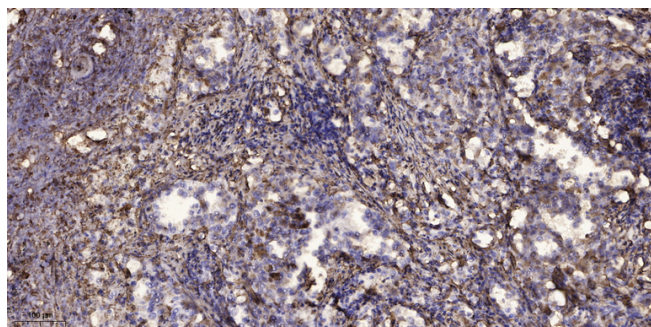
Usage suggestions

This product can be used in immunological reaction related experiments. For more information, please consult technical personnel.

Products Images



Western Blot analysis of extracts from K562, Jurkat cells, using SNM1B Polyclonal Antibody. Secondary antibody(catalog#:RS0002) was diluted at 1:20000 cells nucleus extracted by Minute TM Cytoplasmic and Nuclear Fractionation kit (SC-003, Invent biotech, MN, USA).



Immunohistochemical analysis of paraffin-embedded human Squamous cell carcinoma of lung. 1, Antibody was diluted at 1:200(4° overnight). 2, Tris-EDTA, pH9.0 was used for antigen retrieval. 3, Secondary antibody was diluted at 1:200(room temperature, 45min).