



CHD1L Polyclonal Antibody

Catalog No	BYab-02212
Isotype	IgG
Reactivity	Human;Mouse
Applications	WB;ELISA
Gene Name	CHD1L
Protein Name	Chromodomain-helicase-DNA-binding protein 1-like
Immunogen	The antiserum was produced against synthesized peptide derived from human CHD1L. AA range:545-594
Specificity	CHD1L Polyclonal Antibody detects endogenous levels of CHD1L protein.
Formulation	Liquid in PBS containing 50% glycerol, 0.5% BSA and 0.02% sodium azide.
Source	Polyclonal, Rabbit,IgG
Purification	The antibody was affinity-purified from rabbit antiserum by affinity-chromatography using epitope-specific immunogen.
Dilution	Western Blot: 1/500 - 1/2000. ELISA: 1/20000. Not yet tested in other applications.
Concentration	1 mg/ml
Purity	≥90%
Storage Stability	-20°C/1 year
Synonyms	CHD1L; ALC1; Chromodomain-helicase-DNA-binding protein 1-like; Amplified in liver cancer protein 1
Observed Band	101kD
Cell Pathway	Nucleus . Localizes at sites of DNA damage. Probably recruited to DNA damage sites by PARylated PARP1. .
Tissue Specificity	Frequently overexpressed in hepatomacellular carcinomas.
Function	function:Putative DNA helicase, which may play a role in chromatin-remodeling. In vitro, promotes cell proliferation and inhibits apoptois.,similarity:Belongs to the SNF2/RAD54 helicase family.,similarity:Contains 1 helicase ATP-binding domain.,similarity:Contains 1 helicase C-terminal domain.,similarity:Contains 1 Macro domain.,tissue specificity:Frequently overexpressed in hepatomacellular carcinomas.,
Background	chromodomain helicase DNA binding protein 1 like(CHD1L) Homo sapiens This gene encodes a DNA helicase protein involved in DNA repair. The protein converts ATP to add poly(ADP-ribose) as it regulates chromatin relaxation

Nanjing BYabscience technology Co.,Ltd



following DNA damage. Several alternatively spliced transcripts variants have been described for this gene. [provided by RefSeq, Jan 2012],

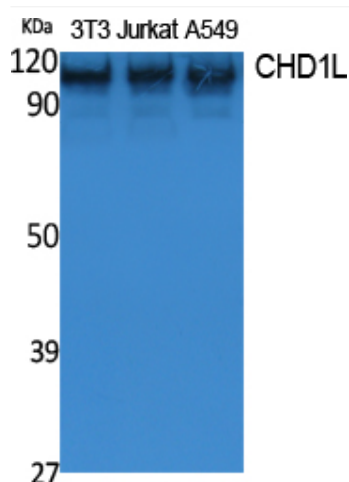
matters needing attention

Avoid repeated freezing and thawing!

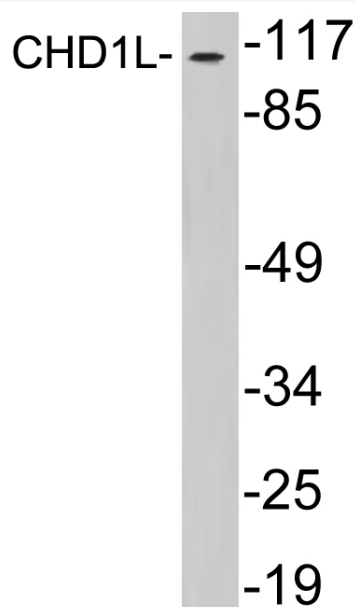
Usage suggestions

This product can be used in immunological reaction related experiments. For more information, please consult technical personnel.

Products Images



Western Blot analysis of extracts from NIH-3T3, Jurkat, A549 cells, using CHD1L Polyclonal Antibody. Secondary antibody(catalog#:RS0002) was diluted at 1:20000 cells nucleus extracted by Minute TM Cytoplasmic and Nuclear Fractionation kit (SC-003, Invent biotech, MN, USA).



Western blot analysis of lysates from HepG2 cells, using CHD1L antibody.