



ZZZ3 Polyclonal Antibody

Catalog No	BYab-02209
Isotype	IgG
Reactivity	Human;Mouse;Rat
Applications	WB;ELISA
Gene Name	ZZZ3
Protein Name	ZZ-type zinc finger-containing protein 3
Immunogen	The antiserum was produced against synthesized peptide derived from human ZZZ3. AA range:341-390
Specificity	ZZZ3 Polyclonal Antibody detects endogenous levels of ZZZ3 protein.
Formulation	Liquid in PBS containing 50% glycerol, 0.5% BSA and 0.02% sodium azide.
Source	Polyclonal, Rabbit,IgG
Purification	The antibody was affinity-purified from rabbit antiserum by affinity-chromatography using epitope-specific immunogen.
Dilution	Western Blot: 1/500 - 1/2000. ELISA: 1/5000. Not yet tested in other applications.
Concentration	1 mg/ml
Purity	≥90%
Storage Stability	-20°C/1 year
Synonyms	ZZZ3; ZZ-type zinc finger-containing protein 3
Observed Band	102kD
Cell Pathway	Nucleus .
Tissue Specificity	Adipose tissue,Brain,Colon endothelium,Lymph,Placenta,Rectum tumor,Spleen,
Function	PTM:Phosphorylated upon DNA damage, probably by ATM or ATR.,similarity:Contains 1 HTH myb-type DNA-binding domain.,similarity:Contains 1 ZZ-type zinc finger.,
Background	PTM:Phosphorylated upon DNA damage, probably by ATM or ATR.,similarity:Contains 1 HTH myb-type DNA-binding domain.,similarity:Contains 1 ZZ-type zinc finger.,
matters needing attention	Avoid repeated freezing and thawing!

Nanjing BYabscience technology Co.,Ltd

网址: www.njbybio.com

官方热线: 025-5229-8998

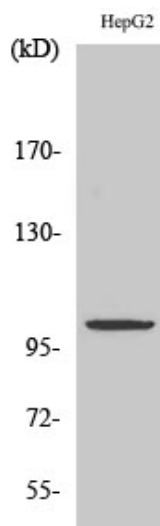
监督电话: 15950492658



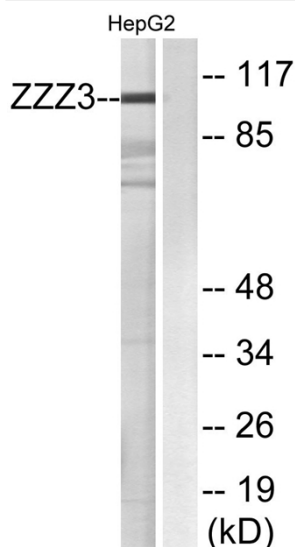
Usage suggestions

This product can be used in immunological reaction related experiments. For more information, please consult technical personnel.

Products Images



Western blot analysis of various cells using ZZZ3 Polyclonal Antibody. Secondary antibody(catalog#:RS0002) was diluted at 1:20000 cells nucleus extracted by Minute TM Cytoplasmic and Nuclear Fractionation kit (SC-003, Inventbiotech, MN, USA).



Western blot analysis of lysates from HepG2 cells, using ZZZ3 Antibody. The lane on the right is blocked with the synthesized peptide.