



# ZNF608 Polyclonal Antibody

<b>Catalog No</b>	BYab-02197
<b>Isotype</b>	IgG
<b>Reactivity</b>	Human;Mouse
<b>Applications</b>	WB;IHC;IF;ELISA
<b>Gene Name</b>	ZNF608
<b>Protein Name</b>	Zinc finger protein 608
<b>Immunogen</b>	The antiserum was produced against synthesized peptide derived from human ZNF608. AA range:1231-1280
<b>Specificity</b>	ZNF608 Polyclonal Antibody detects endogenous levels of ZNF608 protein.
<b>Formulation</b>	Liquid in PBS containing 50% glycerol, 0.5% BSA and 0.02% sodium azide.
<b>Source</b>	Polyclonal, Rabbit,IgG
<b>Purification</b>	The antibody was affinity-purified from rabbit antiserum by affinity-chromatography using epitope-specific immunogen.
<b>Dilution</b>	WB: 1/500 - 1/2000. IHC: 1/100 - 1/300. ELISA: 1/5000.. IF 1:50-200
<b>Concentration</b>	1 mg/ml
<b>Purity</b>	≥90%
<b>Storage Stability</b>	-20°C/1 year
<b>Synonyms</b>	ZNF608; KIAA1281; Zinc finger protein 608; Renal carcinoma antigen NY-REN-36
<b>Observed Band</b>	160kD
<b>Cell Pathway</b>	
<b>Tissue Specificity</b>	Brain,PNS,Renal cell carcinoma,Skin,Testis,
<b>Function</b>	miscellaneous:Antigen recognized by autologous antibody in patients with renal-cell carcinoma.,PTM:Phosphorylated upon DNA damage, probably by ATM or ATR.,similarity:Contains 1 C2H2-type zinc finger.,
<b>Background</b>	miscellaneous:Antigen recognized by autologous antibody in patients with renal-cell carcinoma.,PTM:Phosphorylated upon DNA damage, probably by ATM or ATR.,similarity:Contains 1 C2H2-type zinc finger.,
<b>matters needing attention</b>	Avoid repeated freezing and thawing!

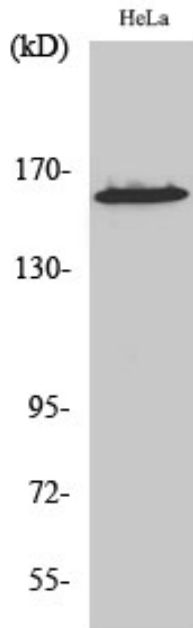
**Nanjing BYabscience technology Co.,Ltd**



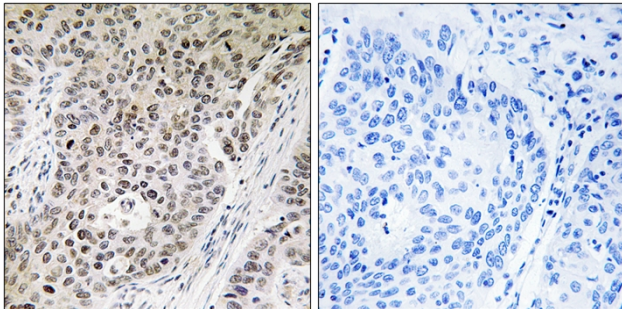
## Usage suggestions

This product can be used in immunological reaction related experiments. For more information, please consult technical personnel.

## Products Images



Western Blot analysis of various cells using ZNF608 Polyclonal Antibody diluted at 1:500. Secondary antibody(catalog#:RS0002) was diluted at 1:20000



Immunohistochemistry analysis of paraffin-embedded human lung carcinoma tissue, using ZNF608 Antibody. The picture on the right is blocked with the synthesized peptide.

Nanjing BYabs science technology Co.,Ltd

网址: [www.njbybio.com](http://www.njbybio.com)

官方热线: 025-5229-8998

监督电话: 15950492658