



ZKSCAN5 Polyclonal Antibody

Catalog No	BYab-02175
Isotype	IgG
Reactivity	Human;Rat;Mouse;
Applications	IHC;IF;ELISA
Gene Name	ZKSCAN5
Protein Name	Zinc finger protein with KRAB and SCAN domains 5
Immunogen	The antiserum was produced against synthesized peptide derived from human ZNF95. AA range:291-340
Specificity	ZKSCAN5 Polyclonal Antibody detects endogenous levels of ZKSCAN5 protein.
Formulation	Liquid in PBS containing 50% glycerol, 0.5% BSA and 0.02% sodium azide.
Source	Polyclonal, Rabbit,IgG
Purification	The antibody was affinity-purified from rabbit antiserum by affinity-chromatography using epitope-specific immunogen.
Dilution	Immunohistochemistry: 1/100 - 1/300. Immunofluorescence: 1/200 - 1/1000. ELISA: 1/5000. Not yet tested in other applications.
Concentration	1 mg/ml
Purity	≥90%
Storage Stability	-20°C/1 year
Synonyms	ZKSCAN5; KIAA1015; ZFP95; Zinc finger protein with KRAB and SCAN domains 5; Zinc finger protein 95 homolog; Zfp-95
Observed Band	
Cell Pathway	Nucleus .
Tissue Specificity	Brain,Testis,
Function	function:May be involved in transcriptional regulation.,similarity:Belongs to the krueppel C2H2-type zinc-finger protein family.,similarity:Contains 1 KRAB domain.,similarity:Contains 1 SCAN box domain.,similarity:Contains 13 C2H2-type zinc fingers.,
Background	This gene encodes a zinc finger protein of the Kruppel family. The protein contains a SCAN box and a KRAB A domain and may be involved in transcriptional regulation. A similar protein in mouse is differentially expressed in spermatogenesis. Alternative splicing results in multiple transcript variants. [provided by RefSeq, Dec 2015],

Nanjing BYabscience technology Co.,Ltd



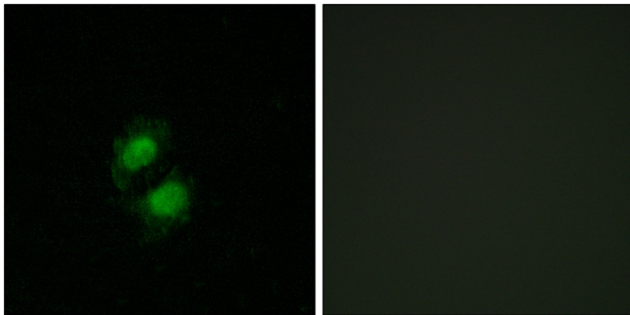
matters needing attention

Avoid repeated freezing and thawing!

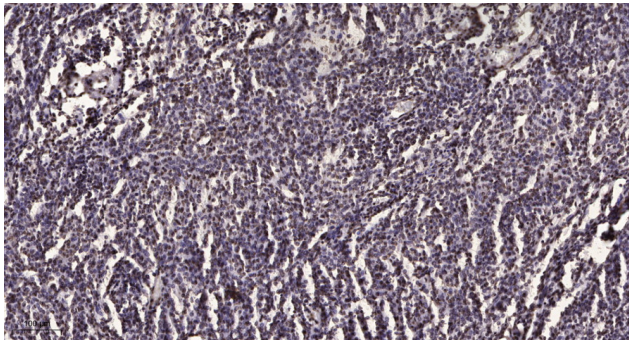
Usage suggestions

This product can be used in immunological reaction related experiments. For more information, please consult technical personnel.

Products Images



Immunofluorescence analysis of A549 cells, using ZNF95 Antibody. The picture on the right is blocked with the synthesized peptide.



Immunohistochemical analysis of paraffin-embedded human brain tumor. 1, Antibody was diluted at 1:200(4° overnight). 2, Tris-EDTA,pH9.0 was used for antigen retrieval. 3,Secondary antibody was diluted at 1:200(room temperature, 45min).

Nanjing BYabscience technology Co.,Ltd

网址: www.njbybio.com

官方热线: 025-5229-8998

监督电话: 15950492658