



ZIS Polyclonal Antibody

Catalog No	BYab-02174
Isotype	IgG
Reactivity	Human;Mouse;Rat
Applications	WB;IHC;IF;ELISA
Gene Name	ZRANB2
Protein Name	Zinc finger Ran-binding domain-containing protein 2
Immunogen	The antiserum was produced against synthesized peptide derived from human ZNF265. AA range:106-155
Specificity	ZIS Polyclonal Antibody detects endogenous levels of ZIS protein.
Formulation	Liquid in PBS containing 50% glycerol, 0.5% BSA and 0.02% sodium azide.
Source	Polyclonal, Rabbit,IgG
Purification	The antibody was affinity-purified from rabbit antiserum by affinity-chromatography using epitope-specific immunogen.
Dilution	Western Blot: 1/500 - 1/2000. Immunohistochemistry: 1/100 - 1/300. Immunofluorescence: 1/200 - 1/1000. ELISA: 1/10000. Not yet tested in other applications.
Concentration	1 mg/ml
Purity	≥90%
Storage Stability	-20°C/1 year
Synonyms	ZRANB2; ZIS; ZNF265; Zinc finger Ran-binding domain-containing protein 2; Zinc finger protein 265; Zinc finger; splicing
Observed Band	34kD
Cell Pathway	Nucleus .
Tissue Specificity	Brain,Epithelium,Fetal brain,Fetal kidney,Liver,Skin,Testis,Uterus,
Function	domain:The RanBP2-type zinc fingers mediate binding to RNA.,function:Splice factor required for alternative splicing of TRA2B/SFRS10 transcripts. May interfere with constitutive 5'-splice site selection.,PTM:Isoform 2 is phosphorylated on Ser-310 upon DNA damage, probably by ATM or ATR.,sequence caution:Intron retention.,similarity:Belongs to the ZRANB2 family.,similarity:Contains 2 RanBP2-type zinc fingers.,subunit:Interacts with the C-terminal half of SNRNP70, the Arg/Ser-rich domain of XE7 as well as with U2AF1 and CLK1.,

Nanjing BYabscience technology Co.,Ltd



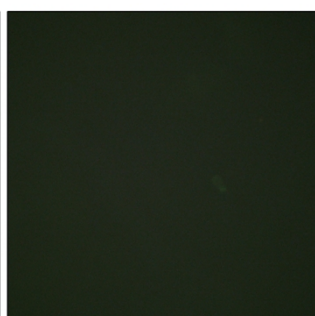
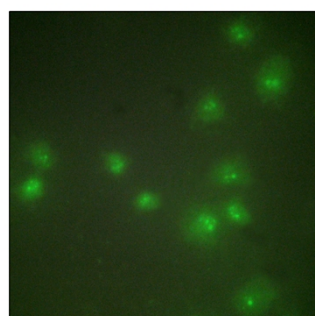
Background	domain:The RanBP2-type zinc fingers mediate binding to RNA.,function:Splice factor required for alternative splicing of TRA2B/SFRS10 transcripts. May interfere with constitutive 5'-splice site selection.,PTM:Isoform 2 is phosphorylated on Ser-310 upon DNA damage, probably by ATM or ATR.,sequence caution:Intron retention.,similarity:Belongs to the ZRANB2 family.,similarity:Contains 2 RanBP2-type zinc fingers.,subunit:Interacts with the C-terminal half of SNRNP70, the Arg/Ser-rich domain of XE7 as well as with U2AF1 and CLK1.,
matters needing attention	Avoid repeated freezing and thawing!
Usage suggestions	This product can be used in immunological reaction related experiments. For more information, please consult technical personnel.



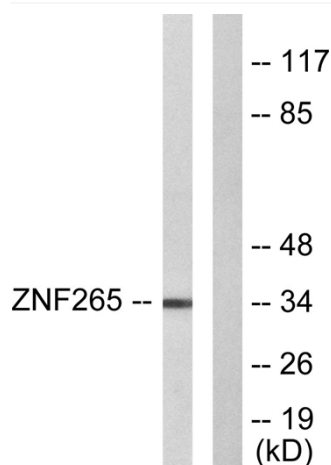
Products Images



Western Blot analysis of various cells using ZIS Polyclonal Antibody. Secondary antibody(catalog#:RS0002) was diluted at 1:20000 cells nucleus extracted by Minute TM Cytoplasmic and Nuclear Fractionation kit (SC-003, Invent biotech, MN, USA).



Immunofluorescence analysis of HUVEC cells, using ZNF265 Antibody. The picture on the right is blocked with the synthesized peptide.



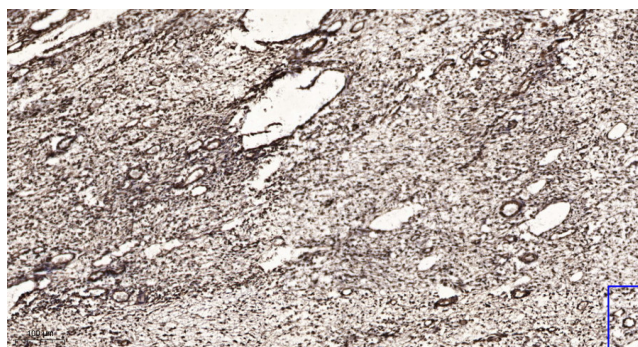
Western blot analysis of lysates from HeLa cells, using ZNF265 Antibody. The lane on the right is blocked with the synthesized peptide.

Nanjing BYabs science technology Co.,Ltd

网址: www.njbybio.com

官方热线: 025-5229-8998

监督电话: 15950492658



Immunohistochemical analysis of paraffin-embedded human oophoroma. 1, Antibody was diluted at 1:200(4° overnight). 2, Tris-EDTA,pH9.0 was used for antigen retrieval. 3,Secondary antibody was diluted at 1:200(room temperature, 45min).