



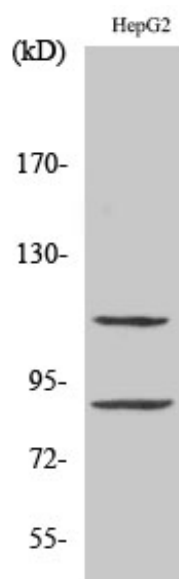
ZBP-89 Polyclonal Antibody

Catalog No	BYab-02162
Isotype	IgG
Reactivity	Human;Mouse;Rat
Applications	WB;IHC;IF;ELISA
Gene Name	ZNF148
Protein Name	Zinc finger protein 148
Immunogen	The antiserum was produced against synthesized peptide derived from human ZNF148. AA range:61-110
Specificity	ZBP-89 Polyclonal Antibody detects endogenous levels of ZBP-89 protein.
Formulation	Liquid in PBS containing 50% glycerol, 0.5% BSA and 0.02% sodium azide.
Source	Polyclonal, Rabbit,IgG
Purification	The antibody was affinity-purified from rabbit antiserum by affinity-chromatography using epitope-specific immunogen.
Dilution	Western Blot: 1/500 - 1/2000. Immunohistochemistry: 1/100 - 1/300. Immunofluorescence: 1/200 - 1/1000. ELISA: 1/5000. Not yet tested in other applications.
Concentration	1 mg/ml
Purity	≥90%
Storage Stability	-20°C/1 year
Synonyms	ZNF148; ZBP89; Zinc finger protein 148; Transcription factor ZBP-89; Zinc finger DNA-binding protein 89
Observed Band	89kD
Cell Pathway	Nucleus.
Tissue Specificity	Epithelium,Insulinoma,Kidney,Peripheral blood,Primary B-Cells,Testis,
Function	function:Involved in transcriptional regulation. Represses the transcription of a number of genes including gastrin, stromelysin and enolase. Binds to the G-rich box in the enhancer region of these genes.,similarity:Belongs to the krueppel C2H2-type zinc-finger protein family.,similarity:Contains 4 C2H2-type zinc fingers.,subunit:Interacts with HNRPDL.,
Background	function:Involved in transcriptional regulation. Represses the transcription of a number of genes including gastrin, stromelysin and enolase. Binds to the G-rich box in the enhancer region of these genes.,similarity:Belongs to the krueppel

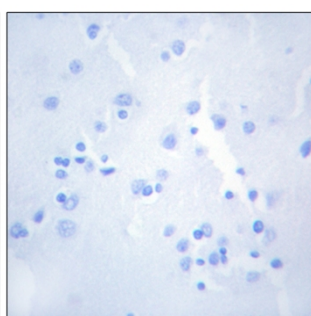
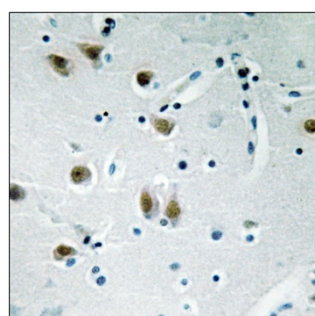
Nanjing BYabscience technology Co.,Ltd



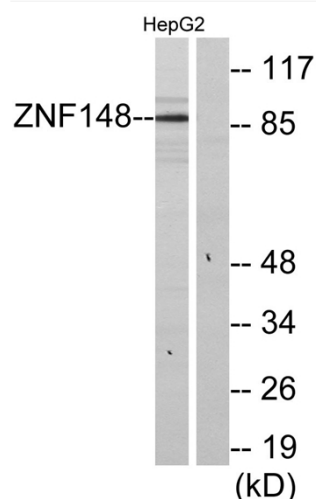
Products Images



Western Blot analysis of various cells using ZBP-89 Polyclonal Antibody. Secondary antibody(catalog#:RS0002) was diluted at 1:20000



Immunohistochemistry analysis of paraffin-embedded human brain tissue, using ZNF148 Antibody. The picture on the right is blocked with the synthesized peptide.



Western blot analysis of lysates from HepG2 cells, using ZNF148 Antibody. The lane on the right is blocked with the synthesized peptide.

Nanjing BYabs science technology Co.,Ltd

网址: www.njbybio.com

官方热线: 025-5229-8998

监督电话: 15950492658