



TSC-22 Polyclonal Antibody

Catalog No	BYab-02140
Isotype	IgG
Reactivity	Human;Mouse;Rat
Applications	WB;IHC;IF;ELISA
Gene Name	TSC22D1
Protein Name	TSC22 domain family protein 1
Immunogen	The antiserum was produced against synthesized peptide derived from human TSC22D1. AA range:71-120
Specificity	TSC-22 Polyclonal Antibody detects endogenous levels of TSC-22 protein.
Formulation	Liquid in PBS containing 50% glycerol, 0.5% BSA and 0.02% sodium azide.
Source	Polyclonal, Rabbit,IgG
Purification	The antibody was affinity-purified from rabbit antiserum by affinity-chromatography using epitope-specific immunogen.
Dilution	Western Blot: 1/500 - 1/2000. Immunohistochemistry: 1/100 - 1/300. Immunofluorescence: 1/200 - 1/1000. ELISA: 1/20000. Not yet tested in other applications.
Concentration	1 mg/ml
Purity	≥90%
Storage Stability	-20°C/1 year
Synonyms	TSC22D1; KIAA1994; TGFB1I4; TSC22; hucep-2; TSC22 domain family protein 1; Cerebral protein 2; Regulatory protein TSC-22; TGFB-stimulated clone 22 homolog; Transforming growth factor beta-1-induced transcript 4 protein
Observed Band	16kD
Cell Pathway	Cytoplasm . Nucleus .
Tissue Specificity	Widely expressed in fetal and adult tissues.
Function	function:Transcriptional repressor. Acts on the C-type natriuretic peptide (CNP) promoter.,induction:In aortic endothelial cells, induced by cytokines, including TGFB.,similarity:Belongs to the TSC-22/Dip/Bun family.,subunit:Homodimer or heterodimer. Can form an heterodimer with TSC22D4.,tissue specificity:Widely expressed in fetal and adult tissues.,
Background	This gene encodes a member of the TSC22 domain family of leucine zipper transcription factors. The encoded protein is stimulated by transforming growth

Nanjing BYabscience technology Co.,Ltd



factor beta, and regulates the transcription of multiple genes including C-type natriuretic peptide. The encoded protein may play a critical role in tumor suppression through the induction of cancer cell apoptosis, and a single nucleotide polymorphism in the promoter of this gene has been associated with diabetic nephropathy. Alternatively spliced transcript variants encoding multiple isoforms have been observed for this gene. [provided by RefSeq, Aug 2011],

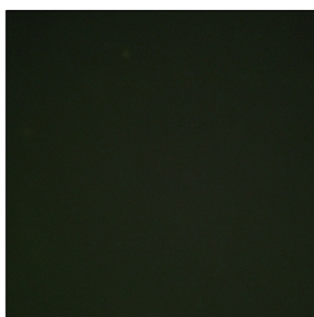
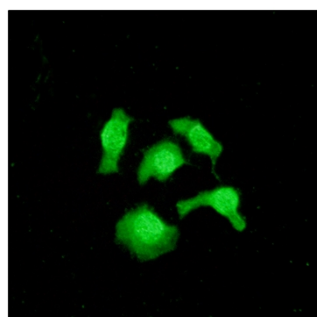
matters needing attention

Avoid repeated freezing and thawing!

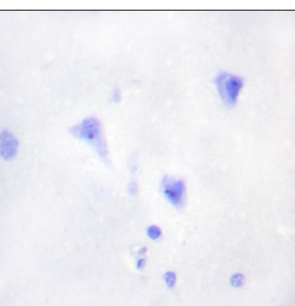
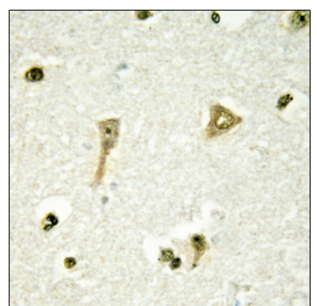
Usage suggestions

This product can be used in immunological reaction related experiments. For more information, please consult technical personnel.

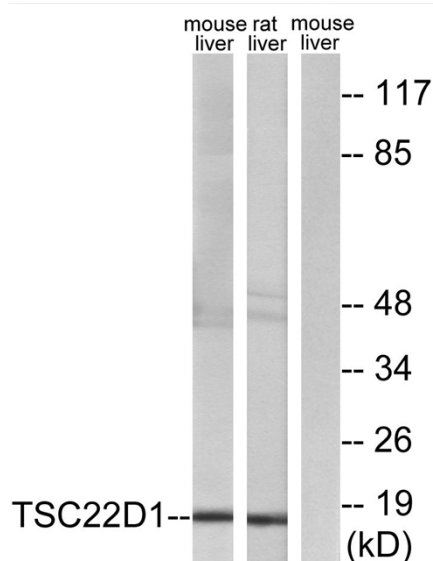
Products Images



Immunofluorescence analysis of HepG2 cells, using TSC22D1 Antibody. The picture on the right is blocked with the synthesized peptide.

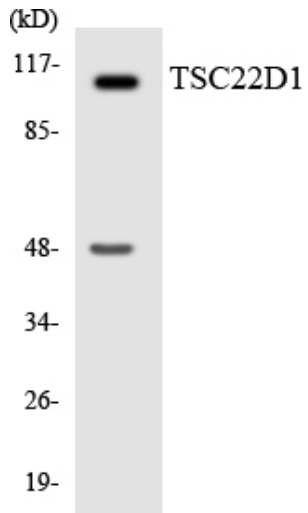


Immunohistochemistry analysis of paraffin-embedded human brain tissue, using TSC22D1 Antibody. The picture on the right is blocked with the synthesized peptide.



Western blot analysis of lysates from mouse liver and rat liver cells, using TSC22D1 Antibody. The lane on the right is blocked with the synthesized peptide.

Nanjing BYabscience technology Co.,Ltd



Western blot analysis of the lysates from HepG2 cells using TSC22D1 antibody.