



TBX15/18 Polyclonal Antibody

Catalog No	BYab-02078
Isotype	IgG
Reactivity	Human;Mouse
Applications	WB;IHC;IF;ELISA
Gene Name	TBX15/TBX18
Protein Name	T-box transcription factor TBX15/18
Immunogen	The antiserum was produced against synthesized peptide derived from human TBX15/18. AA range:161-210
Specificity	TBX15/18 Polyclonal Antibody detects endogenous levels of TBX15/18 protein.
Formulation	Liquid in PBS containing 50% glycerol, 0.5% BSA and 0.02% sodium azide.
Source	Polyclonal, Rabbit,IgG
Purification	The antibody was affinity-purified from rabbit antiserum by affinity-chromatography using epitope-specific immunogen.
Dilution	Western Blot: 1/500 - 1/2000. Immunohistochemistry: 1/100 - 1/300. Immunofluorescence: 1/200 - 1/1000. ELISA: 1/20000. Not yet tested in other applications.
Concentration	1 mg/ml
Purity	≥90%
Storage Stability	-20°C/1 year
Synonyms	TBX18; T-box transcription factor TBX18; T-box protein 18; TBX15; TBX14; T-box transcription factor TBX15; T-box protein 15; T-box transcription factor TBX14; T-box protein 14
Observed Band	64kD
Cell Pathway	Nucleus .
Tissue Specificity	Lung,
Function	function:Probable transcriptional regulator involved in developmental processes.,similarity:Contains 1 T-box DNA-binding domain.,
Background	T-box 18(TBX18) Homo sapiens This genes codes for a member of an evolutionarily conserved family of transcription factors that plays a crucial role in embryonic development. The family is characterized by the presence of the DNA-binding T-box domain and is divided into five sub-families based on sequence conservation in this domain. The encoded protein belongs to the

Nanjing BYabscience technology Co.,Ltd



vertebrate specific Tbx1 sub-family. The protein acts as a transcriptional repressor by antagonizing transcriptional activators in the T-box family. The protein forms homo- or heterodimers with other transcription factors of the T-box family or other transcription factors. [provided by RefSeq, Nov 2012],

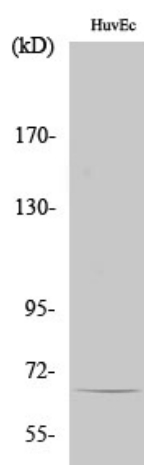
matters needing attention

Avoid repeated freezing and thawing!

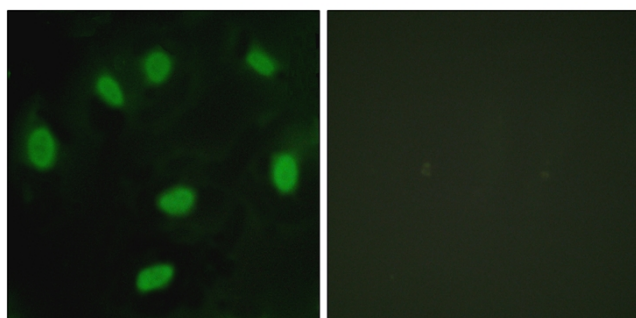
Usage suggestions

This product can be used in immunological reaction related experiments. For more information, please consult technical personnel.

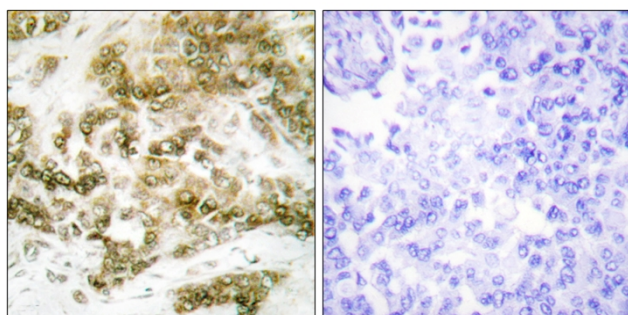
Products Images



Western Blot analysis of various cells using TBX15/18 Polyclonal Antibody cells nucleus extracted by Minute TM Cytoplasmic and Nuclear Fractionation kit (SC-003, Invent biotech, MN, USA).



Immunofluorescence analysis of HeLa cells, using TBX15/18 Antibody. The picture on the right is blocked with the synthesized peptide.



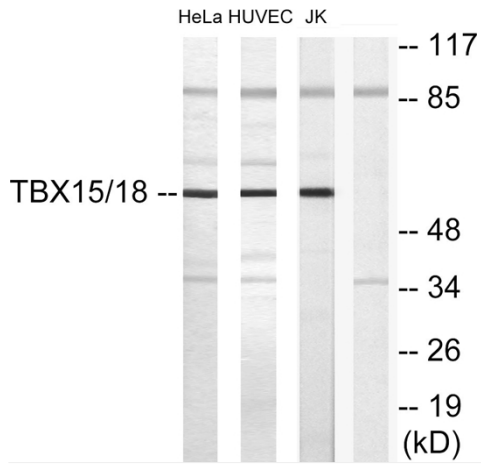
Immunohistochemistry analysis of paraffin-embedded human breast carcinoma tissue, using TBX15/18 Antibody. The picture on the right is blocked with the synthesized peptide.

Nanjing BYabscience technology Co.,Ltd

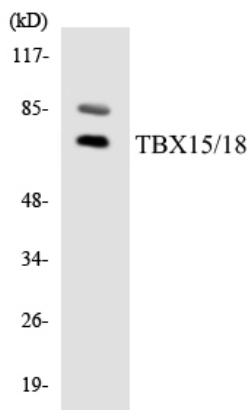
网址: www.njbybio.com

官方热线: 025-5229-8998

监督电话: 15950492658



Western blot analysis of lysates from HUVEC, HeLa, and Jurkat cells, using TBX15/18 Antibody. The lane on the right is blocked with the synthesized peptide.



Western blot analysis of the lysates from HeLa cells using TBX15/18 antibody.