



SSBP1 Polyclonal Antibody

Catalog No	BYab-02049
Isotype	IgG
Reactivity	Human;Mouse;Rat;Cow
Applications	WB;IHC;IF;ELISA
Gene Name	SSBP1
Protein Name	Single-stranded DNA-binding protein mitochondrial
Immunogen	The antiserum was produced against synthesized peptide derived from human MtSSB. AA range:99-148
Specificity	SSBP1 Polyclonal Antibody detects endogenous levels of SSBP1 protein.
Formulation	Liquid in PBS containing 50% glycerol, 0.5% BSA and 0.02% sodium azide.
Source	Polyclonal, Rabbit,IgG
Purification	The antibody was affinity-purified from rabbit antiserum by affinity-chromatography using epitope-specific immunogen.
Dilution	Western Blot: 1/500 - 1/2000. Immunohistochemistry: 1/100 - 1/300. Immunofluorescence: 1/200 - 1/1000. ELISA: 1/20000. Not yet tested in other applications.
Concentration	1 mg/ml
Purity	≥90%
Storage Stability	-20°C/1 year
Synonyms	SSBP1; SSBP; Single-stranded DNA-binding protein; mitochondrial; Mt-SSB; MtSSB; PWP1-interacting protein 17
Observed Band	17kD
Cell Pathway	Mitochondrion . Mitochondrion matrix, mitochondrion nucleoid .
Tissue Specificity	Expressed in retinal ganglion cells, photoreceptors, pigmented epithelium and fibroblasts (at protein level).
Function	function:This protein binds preferentially and cooperatively to ss-DNA. Probably involved in mitochondrial DNA replication.,PTM:Phosphorylated upon DNA damage, probably by ATM or ATR.,similarity:Contains 1 SSB domain.,subunit:Homotetramer.,
Background	SSBP1 is a housekeeping gene involved in mitochondrial biogenesis (Tiranti et al., 1995 [PubMed 7789991]). It is also a subunit of a single-stranded DNA (ssDNA)-binding complex involved in the maintenance of genome stability (Huang et al., 2009) [PubMed 19683501].[supplied by OMIM, Feb 2010],

Nanjing BYabscience technology Co.,Ltd



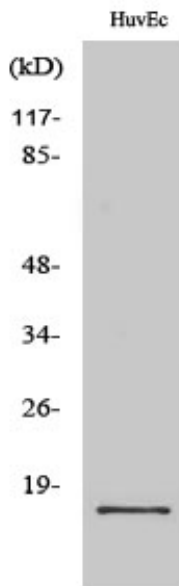
matters needing attention

Avoid repeated freezing and thawing!

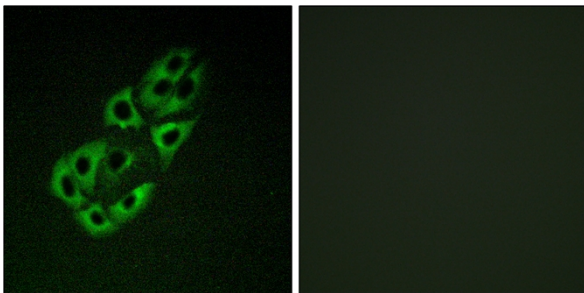
Usage suggestions

This product can be used in immunological reaction related experiments. For more information, please consult technical personnel.

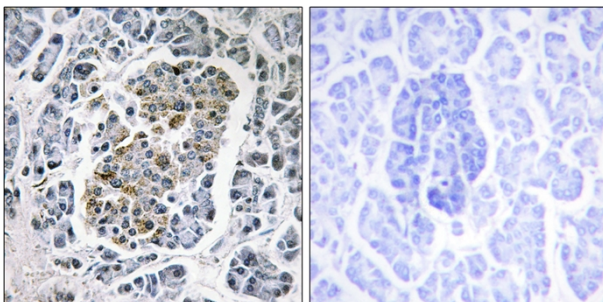
Products Images



Western Blot analysis of various cells using SSBP1 Polyclonal Antibody

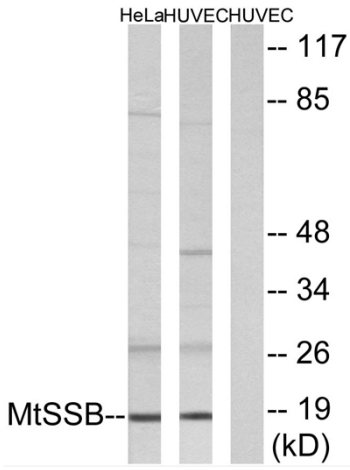


Immunofluorescence analysis of A549 cells, using MtSSB Antibody. The picture on the right is blocked with the synthesized peptide.



Immunohistochemistry analysis of paraffin-embedded human pancreas tissue, using MtSSB Antibody. The picture on the right is blocked with the synthesized peptide.

Nanjing BYabscience technology Co.,Ltd



Western blot analysis of lysates from HUVEC and HeLa cells, using MtSSB Antibody. The lane on the right is blocked with the synthesized peptide.