



SnoN Polyclonal Antibody

Catalog No	BYab-02027
Isotype	IgG
Reactivity	Human;Mouse
Applications	WB;IHC;IF;ELISA
Gene Name	SKIL
Protein Name	Ski-like protein
Immunogen	The antiserum was produced against synthesized peptide derived from human SKIL. AA range:616-665
Specificity	SnoN Polyclonal Antibody detects endogenous levels of SnoN protein.
Formulation	Liquid in PBS containing 50% glycerol, 0.5% BSA and 0.02% sodium azide.
Source	Polyclonal, Rabbit,IgG
Purification	The antibody was affinity-purified from rabbit antiserum by affinity-chromatography using epitope-specific immunogen.
Dilution	WB: 1/500 - 1/2000. IHC: 1/100 - 1/300. ELISA: 1/40000.. IF 1:50-200
Concentration	1 mg/ml
Purity	≥90%
Storage Stability	-20°C/1 year
Synonyms	SKIL; SNO; Ski-like protein; Ski-related oncogene; Ski-related protein
Observed Band	77kD
Cell Pathway	acrosomal vesicle,nucleus,nucleoplasm,transcription factor complex,cytoplasm,PML body,transcriptional repressor complex,protein complex,
Tissue Specificity	Isoform SNON and isoform SNOA are widely expressed. Highest expression is found in skeletal muscle, followed by placenta and lung. Lowest expression in heart, brain and pancreas. Isoform SNOI expression is restricted to skeletal muscle.
Function	function:May have regulatory role in cell division or differentiation in response to extracellular signals.,similarity:Belongs to the SKI family.,subunit:Interacts with SMAD2, SMAD3 and RNF111.,tissue specificity:SNON and SNOA isoforms are widely expressed. Highest expression is found in skeletal muscle, followed by placenta and lung. Lowest expression in heart, brain and pancreas. Expression of isoform SNOI is restricted to skeletal muscle.,
Background	The protein encoded by this gene is a component of the SMAD pathway, which regulates cell growth and differentiation through transforming growth factor-beta

Nanjing BYabscience technology Co.,Ltd



(TGFB). In the absence of ligand, the encoded protein binds to the promoter region of TGFB-responsive genes and recruits a nuclear repressor complex. TGFB signaling causes SMAD3 to enter the nucleus and degrade this protein, allowing these genes to be activated. Four transcript variants encoding three different isoforms have been found for this gene. [provided by RefSeq, Oct 2011],

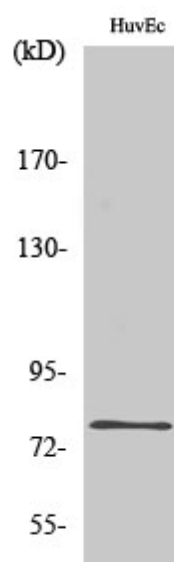
matters needing attention

Avoid repeated freezing and thawing!

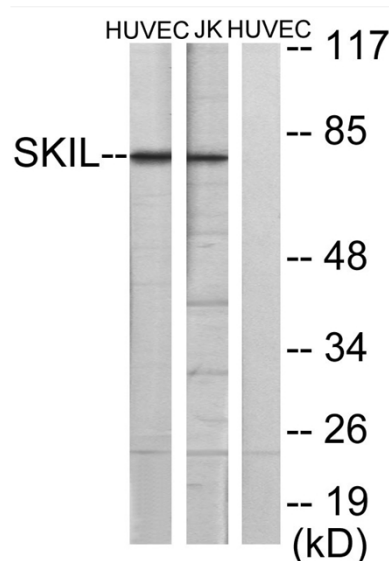
Usage suggestions

This product can be used in immunological reaction related experiments. For more information, please consult technical personnel.

Products Images

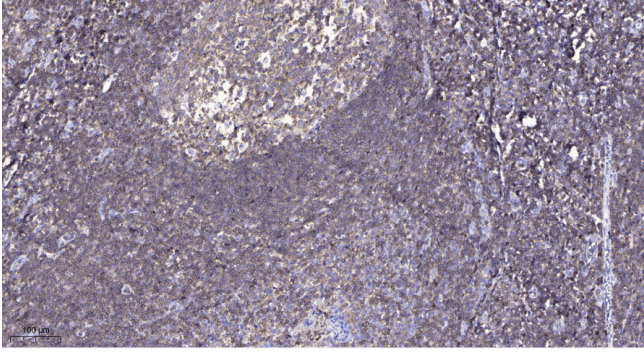


Western Blot analysis of various cells using SnoN Polyclonal Antibody diluted at 1:1000 cells nucleus extracted by Minute TM Cytoplasmic and Nuclear Fractionation kit (SC-003, Inventbiotech, MN, USA).



Western blot analysis of lysates from HUVEC and Jurkat cells, using SKIL Antibody. The lane on the right is blocked with the synthesized peptide.

Nanjing BYabscience technology Co.,Ltd



Immunohistochemical analysis of paraffin-embedded human tonsil. 1, Antibody was diluted at 1:200(4° overnight). 2, Tris-EDTA,pH9.0 was used for antigen retrieval. 3,Secondary antibody was diluted at 1:200(room temperature, 45min).