



SIP1 Polyclonal Antibody

Catalog No	BYab-02012
Isotype	IgG
Reactivity	Human;Mouse;Rat
Applications	WB;IHC;IF;ELISA
Gene Name	ZEB2
Protein Name	Zinc finger E-box-binding homeobox 2
Immunogen	The antiserum was produced against synthesized peptide derived from human ZEB2. AA range:71-120
Specificity	SIP1 Polyclonal Antibody detects endogenous levels of SIP1 protein.
Formulation	Liquid in PBS containing 50% glycerol, 0.5% BSA and 0.02% sodium azide.
Source	Polyclonal, Rabbit,IgG
Purification	The antibody was affinity-purified from rabbit antiserum by affinity-chromatography using epitope-specific immunogen.
Dilution	WB: 1/500 - 1/2000. IHC: 1/100 - 1/300. ELISA: 1/10000.. IF 1:50-200
Concentration	1 mg/ml
Purity	≥90%
Storage Stability	-20°C/1 year
Synonyms	ZEB2; KIAA0569; SIP1; ZFH1B; ZFX1B; HRIHFB2411; Zinc finger E-box-binding homeobox 2; Smad-interacting protein 1; SMADIP1; Zinc finger homeobox protein 1b
Observed Band	157kD
Cell Pathway	Nucleus . Chromosome .
Tissue Specificity	Brain,Fetal brain,
Function	disease:Defects in ZEB2 are the cause of Hirschsprung disease-mental retardation syndrome (Hirschsprung disease) [MIM:235730]; also known as Mowat-Wilson syndrome (MWS). Hirschsprung disease is a rare autosomal dominant complex developmental disorder. Individuals with functional null mutations present with mental retardation, delayed motor development, epilepsy, and a wide spectrum of clinically heterogeneous features suggestive of neurocristopathies at the cephalic, cardiac, and vagal levels. Affected patients show an easily recognizable facial appearance with deep set eyes and hypertelorism, medially divergent, broad eyebrows, prominent columella, pointed

Nanjing BYabs science technology Co.,Ltd



chin and uplifted, notched ear lobes. Additionally, the phenotypic spectrum of facultative congenital anomalies includes short stature, microcephaly, Hirschsprung disease, malformations of the brain (agenesis of corpus callosum, cereb

Background

The protein encoded by this gene is a member of the Zfh1 family of 2-handed zinc finger/homeodomain proteins. It is located in the nucleus and functions as a DNA-binding transcriptional repressor that interacts with activated SMADs. Mutations in this gene are associated with Hirschsprung disease/Mowat-Wilson syndrome. Alternatively spliced transcript variants have been found for this gene.[provided by RefSeq, Jan 2010],

matters needing attention

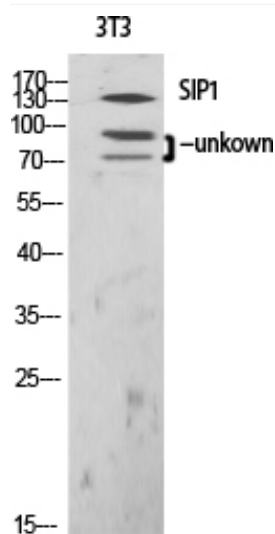
Avoid repeated freezing and thawing!

Usage suggestions

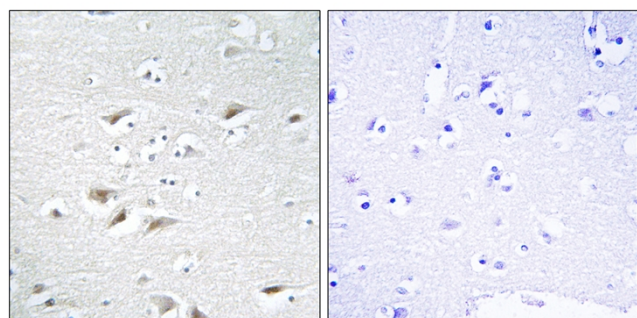
This product can be used in immunological reaction related experiments. For more information, please consult technical personnel.



Products Images



Western Blot analysis of various cells using SIP1 Polyclonal Antibody diluted at 1:1000 cells nucleus extracted by Minute TM Cytoplasmic and Nuclear Fractionation kit (SC-003, Inventbiotech, MN, USA).

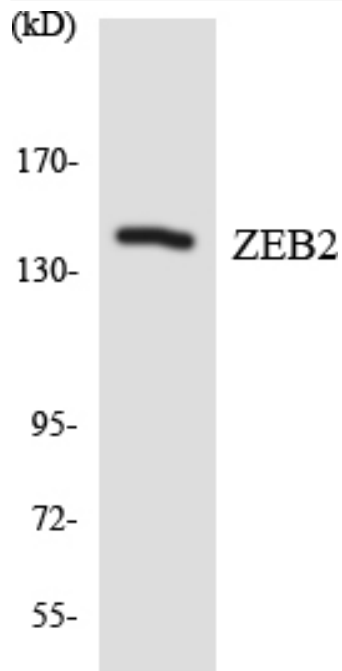


Immunohistochemistry analysis of paraffin-embedded human brain tissue, using ZEB2 Antibody. The picture on the right is blocked with the synthesized peptide.



Western blot analysis of lysates from Jurkat cells, using ZEB2 Antibody. The lane on the right is blocked with the synthesized peptide.

Nanjing BYabs science technology Co.,Ltd



Western blot analysis of the lysates from HepG2 cells using ZEB2 antibody.