



# SCAF1 Polyclonal Antibody

Catalog No	BYab-02004
Isotype	IgG
Reactivity	Human;Mouse
Applications	WB;IHC
Gene Name	SCAF1
Protein Name	Splicing factor arginine/serine-rich 19
Immunogen	The antiserum was produced against synthesized peptide derived from human SFRS19. AA range:41-90
Specificity	SCAF1 Polyclonal Antibody detects endogenous levels of SCAF1 protein.
Formulation	Liquid in PBS containing 50% glycerol, 0.5% BSA and 0.02% sodium azide.
Source	Polyclonal, Rabbit,IgG
Purification	The antibody was affinity-purified from rabbit antiserum by affinity-chromatography using epitope-specific immunogen.
Dilution	WB 1:500-2000;IHC-p 1:50-300
Concentration	1 mg/ml
Purity	≥90%
Storage Stability	-20°C/1 year
Synonyms	SCAF1; SFRS19; SRA1; Splicing factor; arginine/serine-rich 19; SR-related and CTD-associated factor 1; SR-related-CTD-associated factor; SCAF; Serine arginine-rich pre-mRNA splicing factor SR-A1; SR-A1
Observed Band	140kD
Cell Pathway	Nucleus .
Tissue Specificity	Ubiquitous. Highly expressed in fetal brain and liver, poorly expressed in salivary gland, heart, skin and ovary. Expressed in colorectal carcinomas and ovarian cancers. Overexpressed in colorectal carcinomas as compared to normal colonic mucosa.
Function	function:May function in pre-mRNA splicing.,induction:Up-regulated by estrogens, androgens and glucocorticoids.,similarity:Belongs to the splicing factor SR family.,subunit:Interacts with POLR2A.,tissue specificity:Ubiquitous. Highly expressed in fetal brain and liver, poorly expressed in salivary gland, heart, skin and ovary. Expressed in colorectal carcinomas and ovarian cancers. Overexpressed in colorectal carcinomas as compared to normal colonic mucosa.,

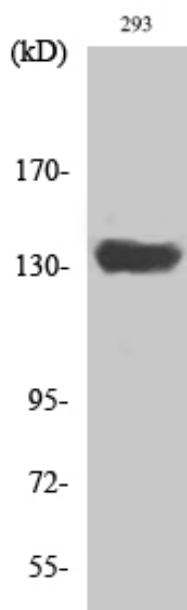
Nanjing BYabscience technology Co.,Ltd



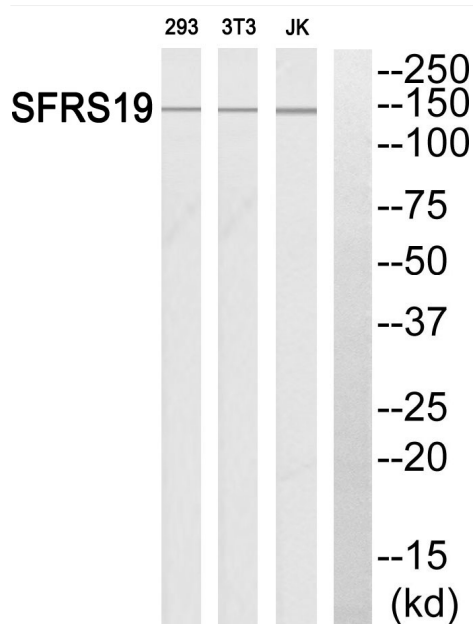
Background	function:May function in pre-mRNA splicing.,induction:Up-regulated by estrogens, androgens and glucocorticoids.,similarity:Belongs to the splicing factor SR family.,subunit:Interacts with POLR2A.,tissue specificity:Ubiquitous. Highly expressed in fetal brain and liver, poorly expressed in salivary gland, heart, skin and ovary. Expressed in colorectal carcinomas and ovarian cancers. Overexpressed in colorectal carcinomas as compared to normal colonic mucosa.,
matters needing attention	Avoid repeated freezing and thawing!
Usage suggestions	This product can be used in immunological reaction related experiments. For more information, please consult technical personnel.



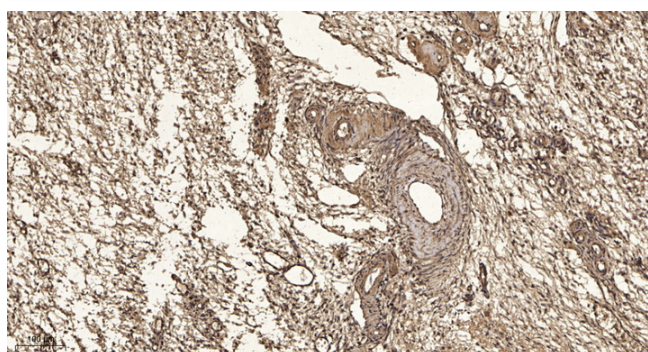
## Products Images



Western Blot analysis of various cells using SCAF1 Polyclonal Antibody diluted at 1:2000 cells nucleus extracted by Minute TM Cytoplasmic and Nuclear Fractionation kit (SC-003, Inventbiotech, MN, USA).



Western blot analysis of SFRS19 Antibody. The lane on the right is blocked with the SFRS19 peptide.



Immunohistochemical analysis of paraffin-embedded human oophoroma. 1, Antibody was diluted at 1:200(4° overnight). 2, Tris-EDTA, pH9.0 was used for antigen retrieval. 3, Secondary antibody was diluted at 1:200(room temperature, 45min).

**Nanjing BYabs science technology Co.,Ltd**

网址: [www.njbybio.com](http://www.njbybio.com)

官方热线: 025-5229-8998

监督电话: 15950492658



Nanjing BYabscience technology Co.,Ltd

网址: [www.njbybio.com](http://www.njbybio.com)

官方热线: 025-5229-8998

监督电话: 15950492658