



# RNF15 Polyclonal Antibody

<b>Catalog No</b>	BYab-01989
<b>Isotype</b>	IgG
<b>Reactivity</b>	Human;Mouse
<b>Applications</b>	WB;IHC
<b>Gene Name</b>	TRIM38
<b>Protein Name</b>	Tripartite motif-containing protein 38
<b>Immunogen</b>	The antiserum was produced against synthesized peptide derived from human TRIM38. AA range:161-210
<b>Specificity</b>	RNF15 Polyclonal Antibody detects endogenous levels of RNF15 protein.
<b>Formulation</b>	Liquid in PBS containing 50% glycerol, 0.5% BSA and 0.02% sodium azide.
<b>Source</b>	Polyclonal, Rabbit,IgG
<b>Purification</b>	The antibody was affinity-purified from rabbit antiserum by affinity-chromatography using epitope-specific immunogen.
<b>Dilution</b>	WB 1:500-2000;IHC-p 1:50-300
<b>Concentration</b>	1 mg/ml
<b>Purity</b>	≥90%
<b>Storage Stability</b>	-20°C/1 year
<b>Synonyms</b>	TRIM38; RNF15; RORET; Tripartite motif-containing protein 38; RING finger protein 15; Zinc finger protein RoRet
<b>Observed Band</b>	58kD
<b>Cell Pathway</b>	Cytoplasm .
<b>Tissue Specificity</b>	Ubiquitous.
<b>Function</b>	similarity:Contains 1 B box-type zinc finger.,similarity:Contains 1 B30.2/SPRY domain.,similarity:Contains 1 RING-type zinc finger.,tissue specificity:Ubiquitous.,
<b>Background</b>	This gene encodes a member of the tripartite motif (TRIM) family. The encoded protein contains a RING-type zinc finger, B box-type zinc finger and SPRY domain. The function of this protein has not been identified. A pseudogene of this gene is located on the long arm of chromosome 4. [provided by RefSeq, Jul 2012],
<b>matters needing attention</b>	Avoid repeated freezing and thawing!

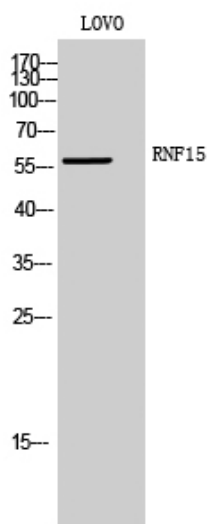
**Nanjing BYabscience technology Co.,Ltd**



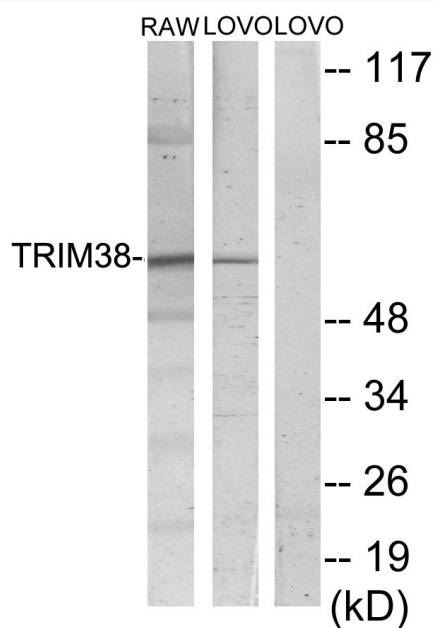
## Usage suggestions

This product can be used in immunological reaction related experiments. For more information, please consult technical personnel.

## Products Images



Western Blot analysis of LOVO cells using RNF15 Polyclonal Antibody



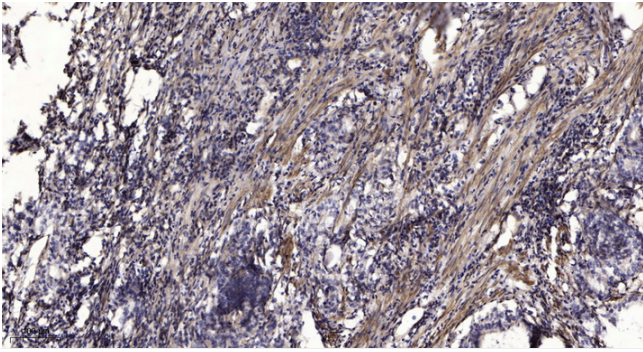
Western blot analysis of lysates from LOVO and RAW264.7 cells, using TRIM38 Antibody. The lane on the right is blocked with the synthesized peptide.

Nanjing BYabs science technology Co.,Ltd

网址: [www.njbybio.com](http://www.njbybio.com)

官方热线: 025-5229-8998

监督电话: 15950492658



Immunohistochemical analysis of paraffin-embedded human Gastric adenocarcinoma. 1, Antibody was diluted at 1:200(4° overnight). 2, Tris-EDTA,pH9.0 was used for antigen retrieval. 3,Secondary antibody was diluted at 1:200(room temperature, 45min).