



# RMP Polyclonal Antibody

<b>Catalog No</b>	BYab-01983
<b>Isotype</b>	IgG
<b>Reactivity</b>	Human;Rat;Mouse;
<b>Applications</b>	WB;IHC;IF;ELISA
<b>Gene Name</b>	URI1
<b>Protein Name</b>	Unconventional prefoldin RPB5 interactor 1
<b>Immunogen</b>	The antiserum was produced against synthesized peptide derived from human RMP. AA range:415-464
<b>Specificity</b>	RMP Polyclonal Antibody detects endogenous levels of RMP protein.
<b>Formulation</b>	Liquid in PBS containing 50% glycerol, 0.5% BSA and 0.02% sodium azide.
<b>Source</b>	Polyclonal, Rabbit,IgG
<b>Purification</b>	The antibody was affinity-purified from rabbit antiserum by affinity-chromatography using epitope-specific immunogen.
<b>Dilution</b>	WB: 1/500 - 1/2000. IHC: 1/100 - 1/300. ELISA: 1/40000.. IF 1:50-200
<b>Concentration</b>	1 mg/ml
<b>Purity</b>	≥90%
<b>Storage Stability</b>	-20°C/1 year
<b>Synonyms</b>	URI1; C19orf2; NNX3; PPP1R19; RMP; URI; Unconventional prefoldin RPB5 interactor 1; Protein NNX3; Protein phosphatase 1 regulatory subunit 19; RNA polymerase II subunit 5-mediating protein; RPB5-mediating protein
<b>Observed Band</b>	56kD
<b>Cell Pathway</b>	Nucleus. Cytoplasm. Mitochondrion. Cell projection, dendrite . Colocalizes with PFDN2, PFDN4, PPP1CC, RPS6KB1 and STAP1 at mitochondrion.
<b>Tissue Specificity</b>	Ubiquitous. Expressed in ovarian cancers (at protein level). Expressed strongly in skeletal muscle. Expressed weakly in brain, heart, pancreas and in prostate epithelial cells.
<b>Function</b>	function:Seems to be a scaffolding protein able to assemble a prefoldin-like complex that contains PFDs and proteins with roles in transcription and ubiquitination.,similarity:Belongs to the RNA polymerase II subunit 5-mediating protein family.,subunit:Component of the URI complex that contains PFD2, POLR2E/RPB5, TIP48, TIP49 and URI. Interacts with POLR2E/RPB5 and LRPPRC.,tissue specificity:Ubiquitous.,

**Nanjing BYabscience technology Co.,Ltd**

**Background**

This gene encodes member of the prefoldin family of molecular chaperones. The encoded protein functions as a scaffolding protein and plays roles in ubiquitination and transcription, in part through interactions with the RNA polymerase II subunit RPB5. This gene may play a role in multiple malignancies including ovarian cancer and hepatocellular carcinoma. Alternatively spliced transcript variants encoding multiple isoforms have been observed for this gene, and a pseudogene of this gene is located on the long arm of chromosome 22. [provided by RefSeq, Nov 2011],

**matters needing attention**

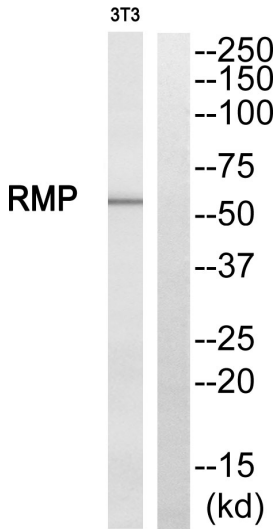
Avoid repeated freezing and thawing!

**Usage suggestions**

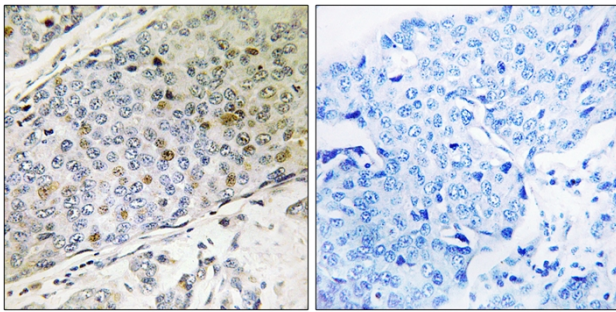
This product can be used in immunological reaction related experiments. For more information, please consult technical personnel.



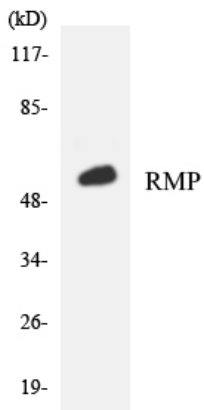
## Products Images



Western blot analysis of RMP Antibody. The lane on the right is blocked with the RMP peptide.



Immunohistochemistry analysis of paraffin-embedded human breast carcinoma, using RMP Antibody. The lane on the right is blocked with the RMP peptide.



Western blot analysis of the lysates from K562 cells using RMP antibody.

**Nanjing BYabscience technology Co.,Ltd**

网址: [www.njbybio.com](http://www.njbybio.com)

官方热线: 025-5229-8998

监督电话: 15950492658