



# POLR3D Polyclonal Antibody

<b>Catalog No</b>	BYab-01952
<b>Isotype</b>	IgG
<b>Reactivity</b>	Human;Mouse
<b>Applications</b>	WB;ELISA;IHC
<b>Gene Name</b>	POLR3D
<b>Protein Name</b>	DNA-directed RNA polymerase III subunit RPC4
<b>Immunogen</b>	The antiserum was produced against synthesized peptide derived from human RPC4. AA range:281-330
<b>Specificity</b>	POLR3D Polyclonal Antibody detects endogenous levels of POLR3D protein.
<b>Formulation</b>	Liquid in PBS containing 50% glycerol, 0.5% BSA and 0.02% sodium azide.
<b>Source</b>	Polyclonal, Rabbit,IgG
<b>Purification</b>	The antibody was affinity-purified from rabbit antiserum by affinity-chromatography using epitope-specific immunogen.
<b>Dilution</b>	WB 1:500-2000;IHC-p 1:50-300; ELISA 2000-20000
<b>Concentration</b>	1 mg/ml
<b>Purity</b>	≥90%
<b>Storage Stability</b>	-20°C/1 year
<b>Synonyms</b>	POLR3D; BN51; BN51T; DNA-directed RNA polymerase III subunit RPC4; RNA polymerase III subunit C4; DNA-directed RNA polymerase III subunit D; Protein BN51; RNA polymerase III 47 kDa subunit; RPC53 homolog
<b>Observed Band</b>	38kD
<b>Cell Pathway</b>	Nucleus.
<b>Tissue Specificity</b>	Epithelium,Lung,Lymph,
<b>Function</b>	function:DNA-dependent RNA polymerase catalyzes the transcription of DNA into RNA using the four ribonucleoside triphosphates as substrates. Specific peripheric component of RNA polymerase III which synthesizes small RNAs, such as 5S rRNA and tRNAs.,similarity:Belongs to the eukaryotic RPC4/POLR3D RNA polymerase subunit family.,subunit:Component of the RNA polymerase III (Pol III) complex consisting of 17 subunits (By similarity). Interacts with POLR3E/RPC5.,
<b>Background</b>	This gene complements a temperature-sensitive mutant isolated from the BHK-21 Syrian hamster cell line. It leads to a block in progression through the G1

**Nanjing BYabs science technology Co.,Ltd**



phase of the cell cycle at nonpermissive temperatures. [provided by RefSeq, Jul 2008],

**matters needing attention**

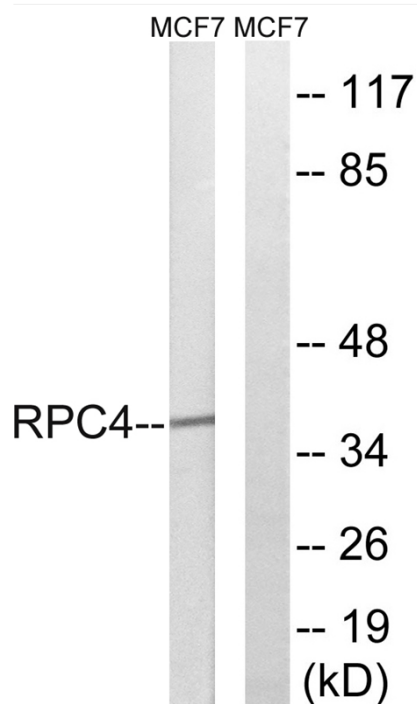
Avoid repeated freezing and thawing!

**Usage suggestions**

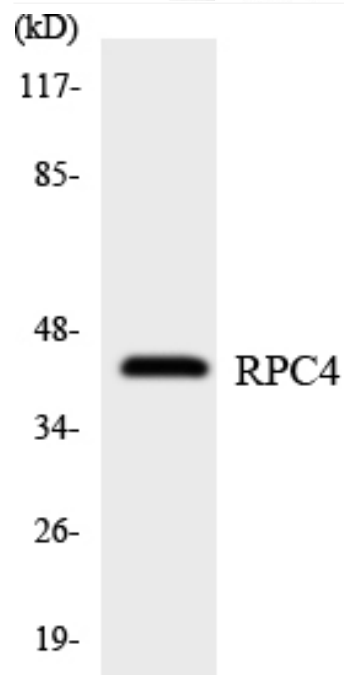
This product can be used in immunological reaction related experiments. For more information, please consult technical personnel.



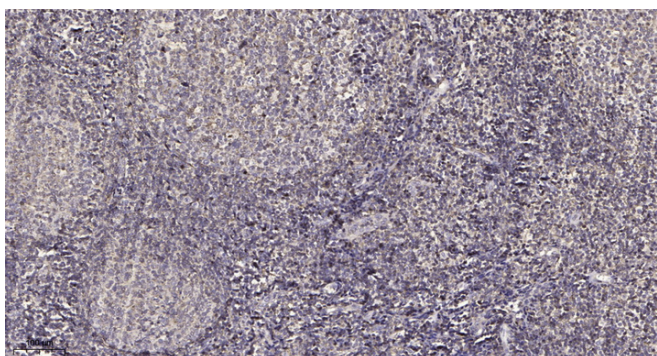
## Products Images



Western blot analysis of lysates from MCF-7 cells, using RPC4 Antibody. The lane on the right is blocked with the synthesized peptide.



Western blot analysis of the lysates from HepG2 cells using RPC4 antibody.



Immunohistochemical analysis of paraffin-embedded human tonsil. 1, Antibody was diluted at 1:200(4° overnight). 2, Tris-EDTA,pH9.0 was used for antigen retrieval. 3,Secondary antibody was diluted at 1:200(room temperature, 45min).